

# Anti-KLHL11 antibody



Catalog Number: 175059

## Product name

Anti-KLHL11 antibody

## Specificity

Human

## Antibody description

Mouse monoclonal antibody to KLHL11

## Preparation

This antigen of this antibody was recombinant protein

## Formulation

Liquid, 1\*TBS (pH7.4), 1%BSA, Preservative: 0.05% Sodium Azide.

## Storage

Store at +4°C after thawing. Aliquot store at -20°C or -80°C. Avoid repeated freeze / thaw cycles.

## Clonality

Monoclonal

## Ig Type

Mouse IgG1

## Applications

WB, ICC/IF, FC

## Dilutions

WB: 1:500-1:1,000

ICC/IF: 1:50-1:200

FC: 1:50-1:200

## Validations

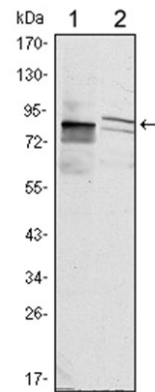


Fig1: Western blot analysis of KLHL11 on HeLa and MCF-7 cell lysate using anti-KLHL11 antibody at 1/1,000 dilution.

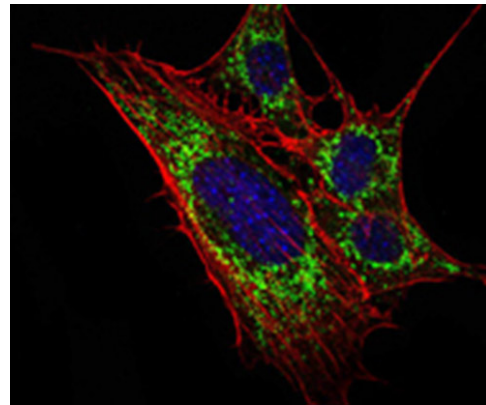


Fig2: ICC staining KLHL11 (green) and Actin filaments (red) in 3T3-L1 cells. The nuclear counter stain is DAPI (blue). Cells were fixed in paraformaldehyde, permeabilised with 0.25% Triton X100/PBS.

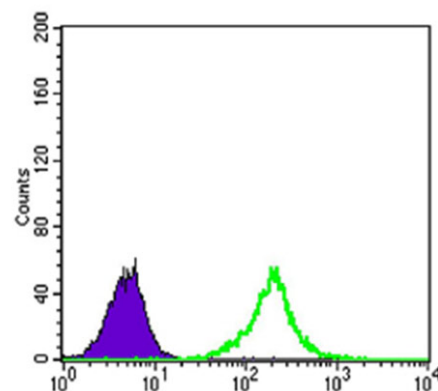


Fig3: Flow cytometric analysis of K562 cells with KLHL11 antibody at 1/100 dilution (green) compared with an unlabelled control (cells without incubation with primary antibody; purple).