

PON2 antibody



Catalog Number: 114059

Product name

PON2 antibody

WB: 1:200-1:2000

IP: 1:200-1:2000

Specificity

Human; other species not tested.

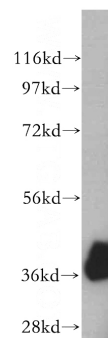
IHC: 1:20-1:200

IF: 1:20-1:200

Antibody description

PON2 Rabbit Polyclonal antibody. Positive WB detected in human liver tissue, L02 cells. Positive IP detected in L02 cells. Positive IHC detected in human liver cancer tissue. Positive IF detected in HepG2 cells. Positive FC detected in HepG2 cells. Observed molecular weight by Western-blot: 39 kDa

Validations



Preparation

This antibody was obtained by immunization of PON2 recombinant protein (Accession Number: BC046160). Purification method: Antigen affinity purified.

human liver tissue were subjected to SDS PAGE followed by western blot with Catalog No:114059(PON2 antibody) at dilution of 1:300

Formulation

PBS with 0.02% sodium azide and 50% glycerol pH 7.3.

Storage

Store at -20°C. DO NOT ALIQUOT

Clonality

Polyclonal

Ig Type

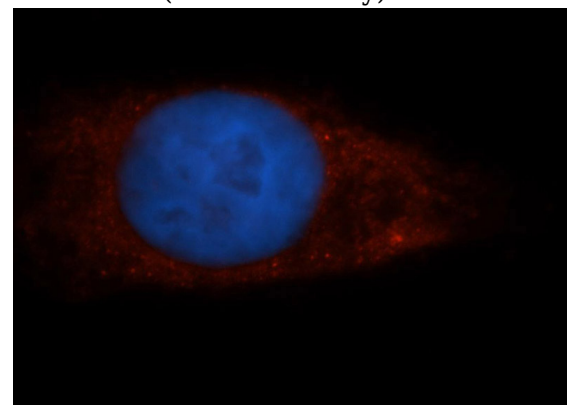
Rabbit IgG

Applications

ELISA, WB, IF, FC, IHC, IP

Dilutions

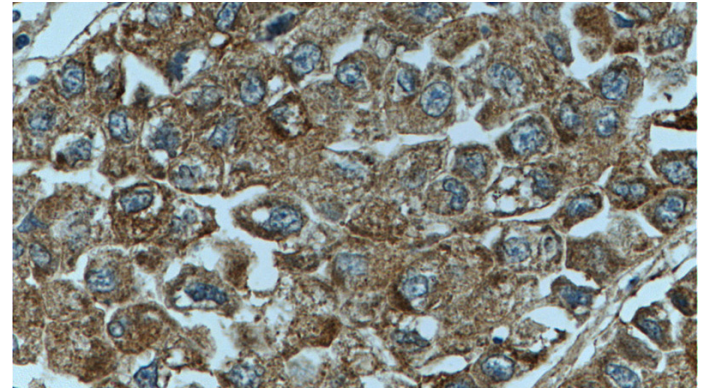
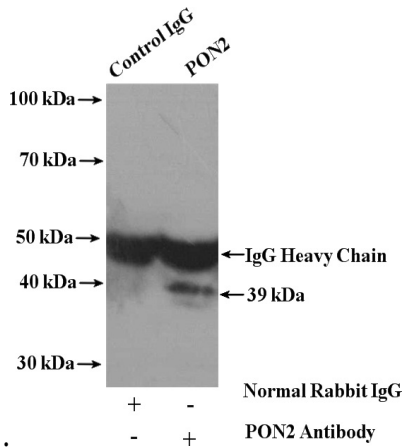
Recommended Dilution:



Immunofluorescent analysis of HepG2 cells, using PON2 antibody Catalog No:114059 at 1:50 dilution and Rhodamine-labeled goat anti-rabbit IgG (red). Blue pseudocolor = DAPI (fluorescent)

PON2 antibody

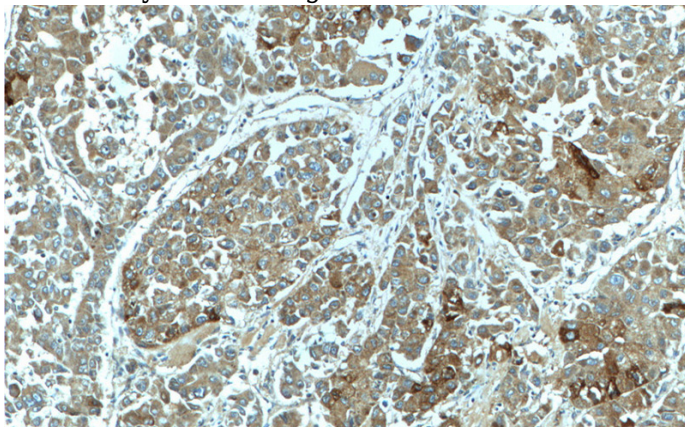
Catalog Number: 114059



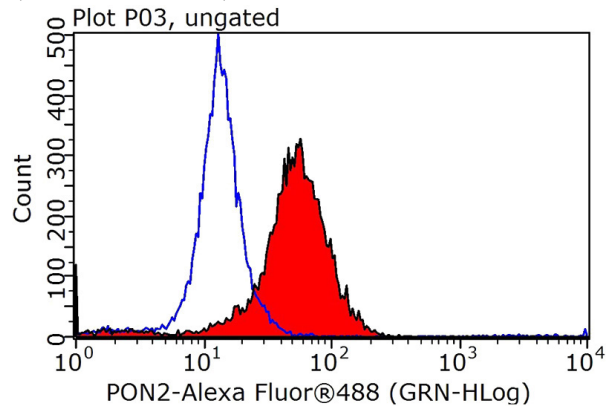
Immunohistochemistry of paraffin-embedded human liver cancer tissue slide using Catalog No:114059(PON2 Antibody) at dilution of 1:200 (under 40x lens)

DNA dye).

IP Result of anti-PON2 (IP:Catalog No:114059, 4ug; Detection:Catalog No:114059 1:500) with L02 cells lysate 3200ug.



Immunohistochemistry of paraffin-embedded human liver cancer tissue slide using Catalog No:114059(PON2 Antibody) at dilution of 1:200 (under 10x lens)



1X10⁶ HepG2 cells were stained with 0.2ug PON2 antibody (Catalog No:114059, red) and control antibody (blue). Fixed with 90% MeOH blocked with 3% BSA (30 min). Alexa Fluor 488-conjugated AffiniPure Goat Anti-Rabbit IgG(H+L) with dilution 1:1000.