

# Kir2.2 antibody

Catalog Number: 112059

## Product name

Kir2.2 antibody

## Specificity

Human, Mouse, Rat; other species not tested.

## Antibody description

Kir2.2 Rabbit Polyclonal antibody. Positive FC detected in HEK-293 cells. Positive WB detected in mouse lung tissue. Observed molecular weight by Western-blot: 45-50kd

## Preparation

This antibody was obtained by immunization of Kir2.2 recombinant protein (Accession Number: NM\_021012). Purification method: Antigen affinity purified.

## Formulation

PBS with 0.02% sodium azide and 50% glycerol pH 7.3.

## Storage

Store at -20°C. DO NOT ALIQUOT

## Clonality

Polyclonal

## Ig Type

Rabbit IgG

## Applications

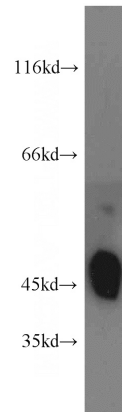
ELISA, WB, FC

## Dilutions

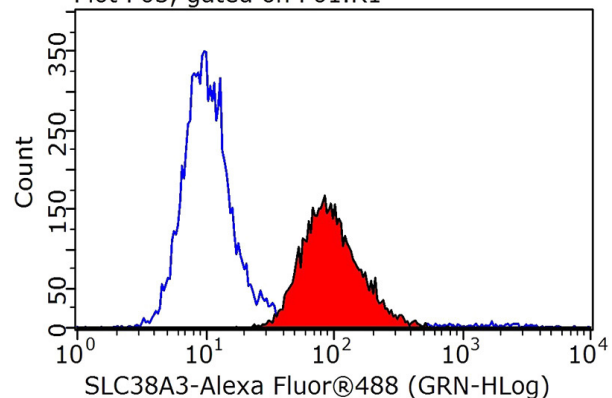
Recommended Dilution:

WB: 1:500-1:5000

## Validations



mouse lung tissue were subjected to SDS PAGE followed by western blot with Catalog No:112059(KCNJ12 antibody) at dilution of 1:1500 Plot P03, gated on P01.R1



1X10<sup>6</sup> HEK-293 cells were stained with 0.2ug KCNJ12 antibody (Catalog No:112059, red) and control antibody (blue). Fixed with 90% MeOH blocked with 3% BSA (30 min). Alexa Fluor 488-conjugated AffiniPure Goat Anti-Rabbit IgG(H+L) with dilution 1:1000.