

Anti-Sorcin antibody



Catalog Number: 101059

Product name

Anti-Sorcin antibody

Immunogen

[Human Sorcin \(His & GST Tag\) recombinant protein](#)

Specificity

Human Sorcin / SRI

Antibody description

Rabbit polyclonal to Sorcin

Preparation

Produced in rabbits immunized with purified, recombinant Human Sorcin / SRI (rh Sorcin / SRI; P30626; Met1-Val198). Sorcin / SRI specific IgG was purified by Human Sorcin / SRI affinity chromatography.

Formulation

0.2 µm filtered solution in PBS

Storage

This antibody can be stored at 2°C-8°C for one month without detectable loss of activity. Antibody products are stable for twelve months from date of receipt when stored at -20°C to -80°C. Preservative-Free.

Sodium azide is recommended to avoid contamination (final concentration 0.05%-0.1%). It is toxic to cells and should be disposed of properly. Avoid repeated freeze-thaw cycles.

Clonality

Polyclonal

Ig Type

Rabbit IgG

Applications

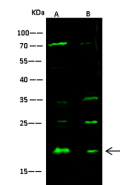
WB, IP

Dilutions

WB: 10-20 µg/ml

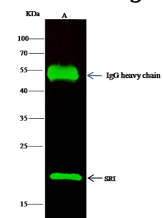
IP: 1-4 µg/mg of lysate

Validations



Lanes	A	B
Items	Mouse brain	Jurkat
Sample	tissue lysate	(whole cell lysate)
Sample Volume (µg/lane)	30	30
Gel	13% SDS-PAGE reducing gel	
Recommended concentration	10-20 µg/ml	
Secondary Antibody	Dylight 800-labeled Antibody To Rabbit IgG (H+L), at 1:5000 dilution.	
Developed using Odyssey imaging system.		
Explanation	Predicted band size : 21 kDa Observed band size : 18 kDa Additional bands at : 70 kDa, 35kDa and 25 kDa (We are unsure as to the identity of these extra bands. They are possible non-specific bindings).	

Sorcin / SRI Antibody, Rabbit PAb, Antigen Affinity



Items	Lanes	A
Sample (wholecell lysate)		HdA
Sample quantity		0.5 mg
IP antibody quantity		2 µg
Protein G agarose		15 µl of 50% Protein G Agarose
Od		13% SDS-PAGE reducing gel
Primary antibody		EG3C-SRI antibody at 10 µg/ml
Secondary antibody		Dylight 800-labeled antibody to rabbit IgG (H+L), at 1:5000 dilution.

Purified, Western blot

Sorcin / SRI Antibody, Rabbit PAb, Antigen Affinity
Purified, Immunoprecipitation

Immunochemical staining of human MAPK14 in human placenta with rabbit polyclonal antibody (1 µg/mL, formalin-fixed paraffin embedded sections).