

Anti-BubR1 Rabbit antibody



Catalog Number: 167749

Product name

Anti-BubR1 Rabbit antibody

Specificity

Human, Mouse, Rat

Antibody description

BubR1 Rabbit monoclonal antibody

Preparation

Antigen: A synthetic peptide of human BubR1

Formulation

50nM Tris-Glycine(pH 7.4), 0.15M NaCl, 40%Glycerol, 0.01% sodium azide and 0.05% BSA

Storage

Store at 4°C short term. Store at -20°C long term. Avoid freeze / thaw cycle.

Clonality

Monoclonal

Ig Type

Rabbit IgG

Applications

WB, IHC-P, FC, IP

Dilutions

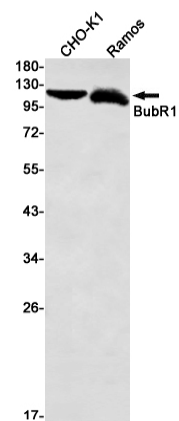
WB: 1/2000-1/10000

IHC: 1/20

FC: 1/20

IP: 1/20

Validations



Western blot detection of BubR1 in CHO-K1, Ramos cell lysates using BubR1 Rabbit mAb(1:1000 diluted). Predicted band size:120kDa. Observed band size:120kDa.