

General Information

Gene Name Synonym

170 kDa melanoma membrane-bound gelatinase; Dipeptidyl peptidase FAP; Fibroblast activation protein alpha; FAPalpha; Gelatine degradation protease FAP; Integral membrane serine protease; Post-proline cleaving enzyme; Serine integral membrane protease; SIMP; Surface-expressed protease; Seprase [Cleaved into: Antiplasmin-cleaving enzyme FAP, soluble form; APCE]

Protein Construction

A DNA sequence encoding the human FAP isoform 1 (Q12884-1) extracellular domain (Leu26-Asp760) was fused with the polyhistidine-tag at the N-terminus. The purified protein was biotinylated in vitro.

Organism

Human

Expression Host

Human Cells

QC Testing

Purity

> 85 % as determined by SDS-PAGE

Endotoxin

< 1.0 EU per µg protein as determined by the LAL method.

Stability

Samples are stable for up to twelve months from date of receipt at -70°C

Predicted N terminal

His

Molecular Mass

The recombinant human FAP consists of 751 amino acids and predicts a molecular mass of 87.2 kDa.

Formulation

Lyophilized from sterile PBS.

1. Normally 5 % - 8 % trehalose, mannitol and 0.01% Tween80 are added as protectants before lyophilization. Specific concentrations are included in the hardcopy of COA.
2. Please contact us for any concerns or special requirements.

Usage Guide

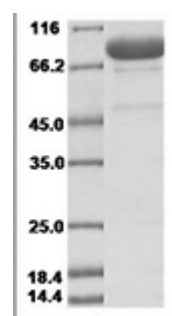
Storage

Store it under sterile conditions at -20°C to -80°C. It is recommended that the protein be aliquoted for optimal storage. Avoid repeated freeze-thaw cycles.

Reconstitution

A hardcopy of COA with reconstitution instruction is sent along with the products. Please refer to it for detailed information.

SDS-PAGE



Human Fibroblast Activation Protein alpha/FAP Protein 15479