

General Information

Protein Construction

A DNA sequence encoding the rat Ldha (NP_058721.1) (Met1-Phe332) was expressed with a polyhistidine tag at the N-terminus.

Organism

Rat

Expression Host

E. coli

QC Testing

Purity

> 95 % as determined by SDS-PAGE.

Endotoxin

Please contact us for more information.

Stability

Samples are stable for up to twelve months from date of receipt at -70°C

Predicted N terminal

Met

Molecular Mass

The recombinant rat Ldha consists 350 amino

acids and predicts a molecular mass of 38.7 kDa.

Formulation

Lyophilized from sterile 50 mM Tris, 50 mM NaCl.
1. 5 % trehalose and mannitol are added as protectants before lyophilization.
2. Please contact us for any concerns or special requirements.

Usage Guide

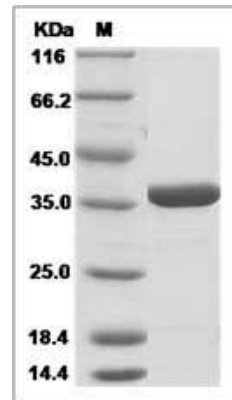
Storage

Store it under sterile conditions at -20°C to -80°C. It is recommended that the protein be aliquoted for optimal storage. Avoid repeated freeze-thaw cycles.

Reconstitution

Adding sterile water, prepare a stock solution of 0.25 mg/ml. Concentration is measured by UV-Vis.

SDS-PAGE



Rat LDH-A / LDHA Protein (His Tag)