

# Anti-KLF11 antibody



Catalog Number: 176349

## Product name

Rabbit IgG

Anti-KLF11 antibody

## Applications

## Specificity

WB, IHC-P, IF

Human, Mouse

## Dilutions

## Antibody description

WB: 1:500-1:2000

Rabbit polyclonal antibody to KLF11

IHC-P: 1:100-1:300

## Preparation

IF: 1:100-1:500

This antigen of this antibody was the antiserum was produced against synthesized peptide derived from human klf11. aa range:1-50

## Validations

## Formulation

Liquid, Liquid in PBS containing 50% glycerol, 0.5% BSA and 0.02% sodium azide.

## Storage

Store at +4°C after thawing. Aliquot store at -20°C or -80°C. Avoid repeated freeze / thaw cycles.

## Clonality

Polyclonal

## Ig Type

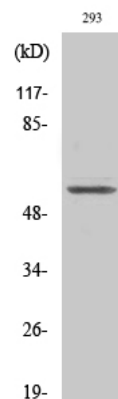


Fig1:: Western Blot analysis of various cells using TIEG2 Polyclonal Antibody cells nucleus extracted by Minute TM Cytoplasmic and Nuclear Fractionation kit (SC-003, Inventbiotech, MN, USA).