

# ONECUT1 antibody



Catalog Number: 113349

## Product name

ONECUT1 antibody

Recommended Dilution:

WB: 1:200-1:2000

## Immunogen

IHC: 1:20-1:200

[Human ONECUT1 Recombinant protein \(GST tag\)](#)

## Validations

## Specificity

Human, Mouse; other species not tested.

## Antibody description

ONECUT1 Rabbit Polyclonal antibody. Positive IHC detected in human liver tissue, human liver cancer tissue. Positive WB detected in mouse liver tissue. Observed molecular weight by Western-blot: 51-55 kDa

## Preparation

This antibody was obtained by immunization of ONECUT1 recombinant protein (Accession Number: NM\_004498). Purification method: Antigen affinity purified.

## Formulation

PBS with 0.1% sodium azide and 50% glycerol pH 7.3.

## Storage

Store at -20°C. DO NOT ALIQUOT

## Clonality

Polyclonal

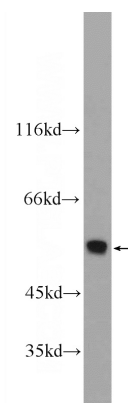
## Ig Type

Rabbit IgG

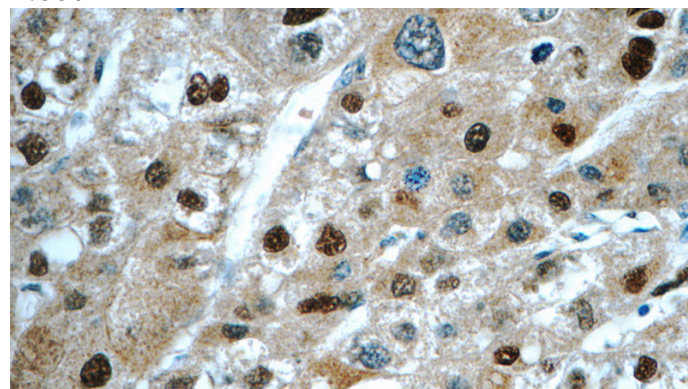
## Applications

ELISA, WB, IHC

## Dilutions



mouse liver tissue were subjected to SDS PAGE followed by western blot with Catalog No:113349(ONECUT1 Antibody) at dilution of 1:600



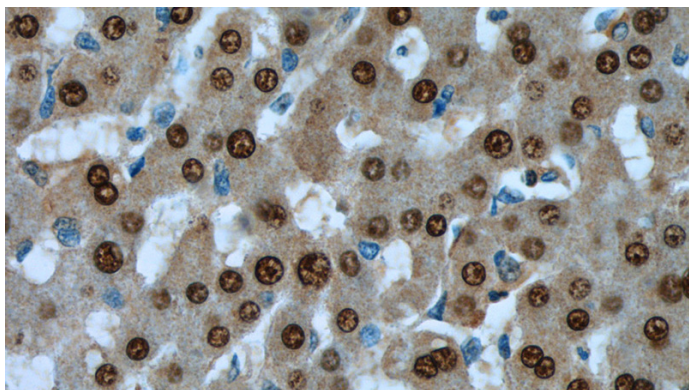
Immunohistochemistry of paraffin-embedded human liver cancer tissue slide using Catalog No:113349(ONECUT1 Antibody) at dilution of 1:50 (under 40x lens)

# ONECUT1 antibody



Catalog Number: 113349

---



Immunohistochemistry of paraffin-embedded human liver tissue slide using Catalog No:113349(ONECUT1 Antibody) at dilution of 1:50 (under 40x lens)