

Anti-BCL2L1/Bcl-XL antibody



Catalog Number: 100349

Product name

Anti-BCL2L1/Bcl-XL antibody

Immunogen

[Mouse BCL2L1/Bcl-XL \(aa 1-212, His Tag\) recombinant protein](#)

Specificity

Mouse BCL2L1 / Bcl-XL

Antibody description

Rabbit monoclonal to BCL2L1/Bcl-XL

Preparation

This antibody was obtained from a rabbit immunized with purified, recombinant Mouse BCL2L1 / Bcl-XL (rM BCL2L1 / Bcl-XL; Q64373-1; Met1-Arg212).

Formulation

0.2 µm filtered solution in PBS

Storage

This antibody can be stored at 2°C-8°C for one month without detectable loss of activity. Antibody products are stable for twelve months from date of receipt when stored at -20°C to -80°C. Preservative-Free.

Sodium azide is recommended to avoid contamination (final concentration 0.05%-0.1%). It is toxic to cells and should be disposed of properly. Avoid repeated freeze-thaw cycles.

Clonality

Monoclonal

Ig Type

Rabbit IgG

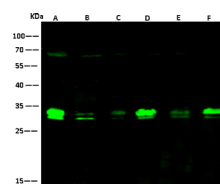
Applications

WB

Dilutions

WB: 2-10 µg/ml

Validations



Lanes	A	B	C	D	E	F
Items						
Sample (whole cell lysate)	HepG2	Jurkat	MCF7	K562	HCT116	NIH-3T3
Sample Volume (µg/lane)	30	30	30	30	30	30
Gel	13% SDS-PAGE reducing gel					
Recommended Concentration	2-10 µg/ml					
Secondary Antibody	Dylight 800-labeled Antibody To Rabbit IgG (H+L), at 1:5000 dilution. Developed using Odyssey imaging system.					
Explanation	Predicted band size : 26 kDa Observed band size : 30 kDa Additional bands at : 65 kDa (We are unsure as to the identity of these extra bands. They are possible non-specific bindings).					

BCL2L1 / Bcl-XL Antibody, Rabbit MAb, Western blot