

ubiquitin antibody



Catalog Number: 116649

Product name

ubiquitin antibody

WB: 1:200-1:2000

IP: 1:200-1:1000

Specificity

Human, Mouse, Rat; other species not tested.

IHC: 1:20-1:200

Antibody description

ubiquitin Rabbit Polyclonal antibody. Positive IHC detected in human pancreas tissue, human ovary tumor tissue. Positive WB detected in MDA-MB-453s cells, HeLa cells, MCF7 cells, mouse liver tissue. Positive IP detected in mouse liver tissue. Observed molecular weight by Western-blot: 8 kDa, 24 kDa

Preparation

This antibody was obtained by immunization of ubiquitin recombinant protein (Accession Number: NM_001281718). Purification method: Antigen affinity purified.

Formulation

PBS with 0.1% sodium azide and 50% glycerol pH 7.3.

Storage

Store at -20°C. DO NOT ALIQUOT

Clonality

Polyclonal

Ig Type

Rabbit IgG

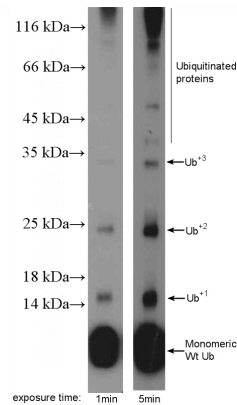
Applications

ELISA, IHC, IP, WB

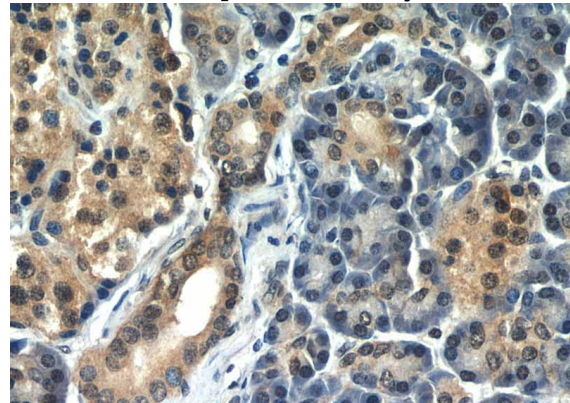
Dilutions

Recommended Dilution:

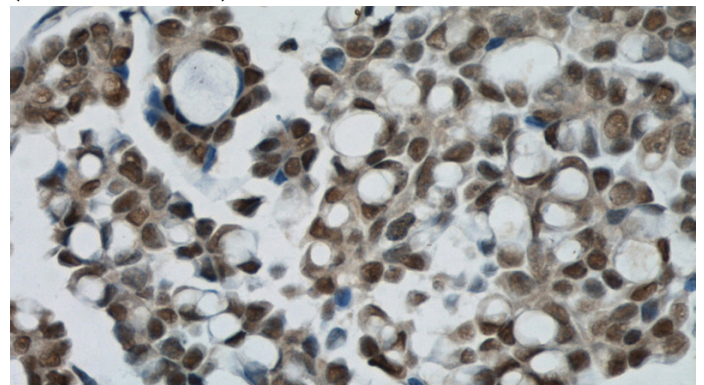
Validations



MDA-MB-453s cells were subjected to SDS PAGE followed by western blot with Catalog No:116649(ubiquitin Antibody) at dilution of 1:600

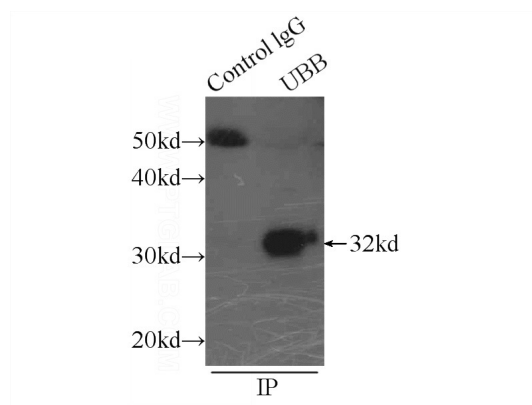


Immunohistochemical of paraffin-embedded human pancreas using Catalog No:116649(ubiquitin antibody) at dilution of 1:50 (under 40x lens)



Catalog Number: 116649

Immunohistochemical of paraffin-embedded human ovary tumor using Catalog No:116649(ubiquitin antibody) at dilution of 1:50 (under 40x lens)



IP Result of anti-ubiquitin (IP:Catalog No:116649, 3ug; Detection:Catalog No:116649 1:300) with mouse liver tissue lysate 5000ug.