

Anti-TMEM123 antibody

Catalog Number: 175649

Product name

Anti-TMEM123 antibody

Specificity

Human, Mouse, Rat, Dog, Pig, Cow, Horse

Antibody description

Rabbit polyclonal antibody to TMEM123

Preparation

This antigen of this antibody was klh conjugated synthetic peptide derived from human porimin 101-180/208

Formulation

Liquid, 0.01M TBS(pH7.4) with 1% BSA, 0.03% Proclin300 and 50% Glycerol.

Storage

Store at -20°C for one year. Avoid repeated freeze/thaw cycles. The lyophilized antibody is stable at room temperature for at least one month and for greater than a year when kept at -20°C. When reconstituted in sterile pH 7.4 0.01M PBS or diluent of antibody the antibody is stable for at least two weeks at 2-4°C.

Clonality

Polyclonal

Ig Type

Rabbit IgG

Applications

WB

Dilutions

WB:1:500-2000

Validations

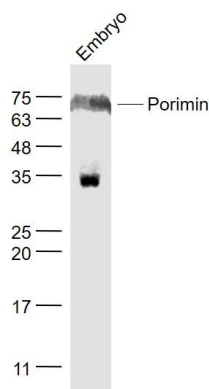
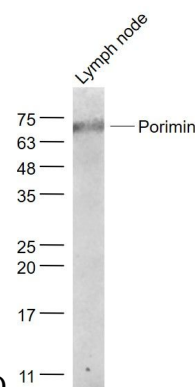
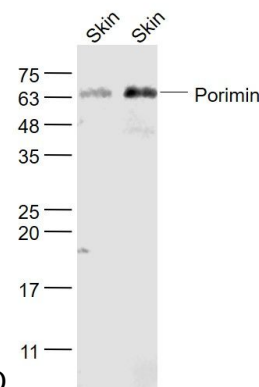


Fig1: Sample:; Embryo (Mouse) Lysate at 40 ug; Primary: Anti- Porimin at 1/1000 dilution; Secondary: IRDye800CW Goat Anti-Rabbit IgG at 1/20000 dilution; Predicted band size: 19 kD;



Observed band size: 74 kD

Fig2: Sample:; Lymph node (Mouse) Lysate at 40 ug; Primary: Anti- Porimin at 1/1000 dilution; Secondary: IRDye800CW Goat Anti-Rabbit IgG at 1/20000 dilution; Predicted band size: 19 kD;



Observed band size: 74 kD

Fig3: Sample:; Skin (Mouse) Lysate at 40 ug; Skin (Rat) Lysate at 40 ug; Primary: Anti- Porimin at 1/1000 dilution; Secondary: IRDye800CW Goat Anti-Rabbit IgG at 1/20000 dilution; Predicted band size: 19 kD; Observed band size: 64 kD