

# PEG10 antibody



Catalog Number: 113649

## Product name

PEG10 antibody

## Specificity

Human, Mouse; other species not tested.

## Antibody description

PEG10 Rabbit Polyclonal antibody. Positive IF detected in HepG2 cells. Positive IHC detected in human breast cancer tissue, human liver cancer tissue, human placenta tissue, mouse brain tissue, mouse liver tissue, mouse testis tissue. Positive WB detected in MCF7 cells, human placenta tissue. Observed molecular weight by Western-blot: 50kd,100kd

## Preparation

This antibody was obtained by immunization of PEG10 recombinant protein (Accession Number: NM\_001040152). Purification method: Antigen affinity purified.

## Formulation

PBS with 0.02% sodium azide and 50% glycerol pH 7.3.

## Storage

Store at -20°C. DO NOT ALIQUOT

## Clonality

Polyclonal

## Ig Type

Rabbit IgG

## Applications

ELISA, WB, IHC, IF

## Dilutions

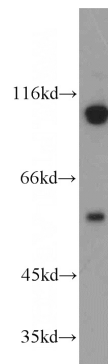
Recommended Dilution:

WB: 1:500-1:5000

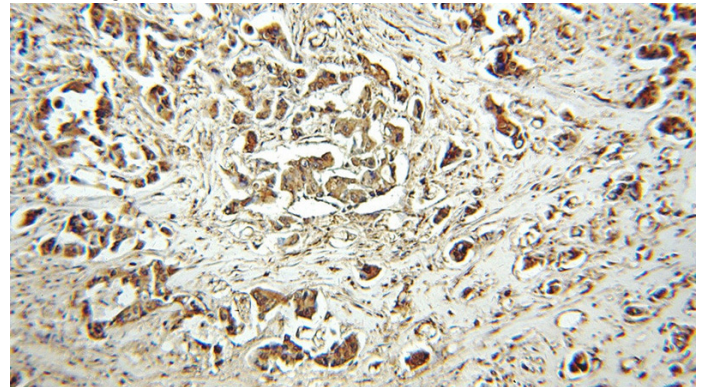
IHC: 1:20-1:200

IF: 1:10-1:100

## Validations



MCF7 cells were subjected to SDS PAGE followed by western blot with Catalog No:113649(PEG10 antibody) at dilution of 1:500

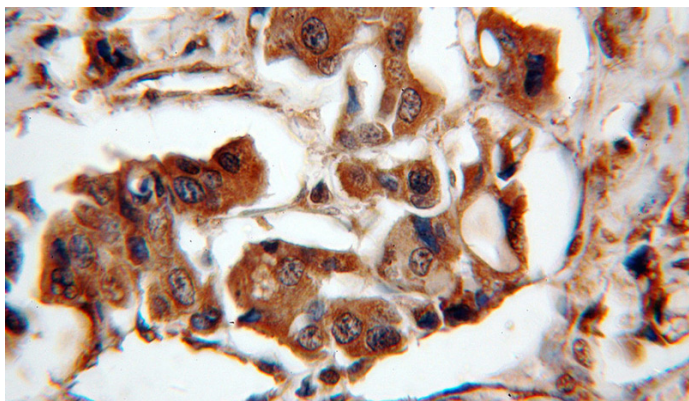


Immunohistochemical of paraffin-embedded human breast cancer using Catalog No:113649(PEG10 antibody) at dilution of 1:100 (under 10x lens)

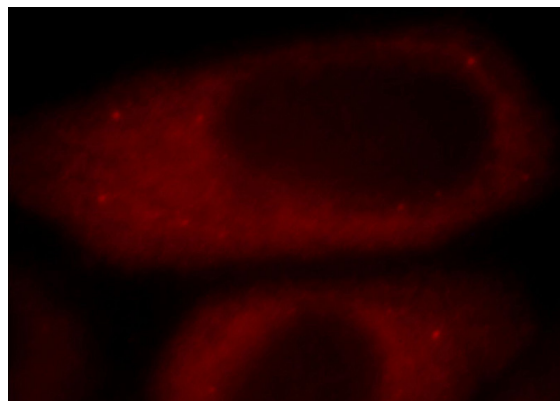
# PEG10 antibody

Catalog Number: 113649

---



Immunohistochemical of paraffin-embedded human breast cancer using Catalog No:113649(PEG10 antibody) at dilution of 1:100 (under 40x lens)



Immunofluorescent analysis of HepG2 cells, using PEG10 antibody Catalog No:113649 at 1:25 dilution and Rhodamine-labeled goat anti-rabbit IgG (red).