

Human PRELP/Prolargin (Fc Tag) recombinant protein



Catalog Number: 501649

General Information

Gene Name Synonym

Proline-arginine-rich end leucine-rich repeat protein

Protein Construction

A DNA sequence encoding the human PRELP (NP_002716.1) (Gln21-Ile382) was expressed with the Fc region of mouse IgG1 at the N-terminus.

Organism

Human

Expression Host

Human Cells

QC Testing

Purity

> 85 % as determined by SDS-PAGE

Endotoxin

< 1.0 EU per μg of the protein as determined by the LAL method

Stability

Samples are stable for up to twelve months from date of receipt at -70°C

Predicted N terminal

Asp

Molecular Mass

The recombinant human PRELP/mFc comprises 598 amino acids and has a predicted molecular mass of 68.3 kDa. The apparent molecular mass of the protein is approximately 80-90 kDa in SDS-PAGE under reducing conditions.

Formulation

Lyophilized from sterile PBS, pH 7.4.

1. 5 % trehalose and mannitol are added as protectants before lyophilization.
2. Please contact us for any concerns or special requirements.

Usage Guide

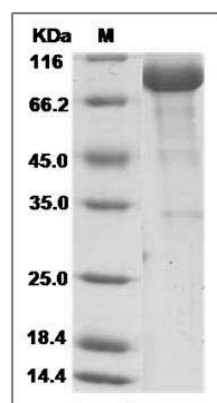
Storage

Store it under sterile conditions at -20°C to -80°C . It is recommended that the protein be aliquoted for optimal storage. Avoid repeated freeze-thaw cycles.

Reconstitution

Adding sterile water, prepare a stock solution of 0.25 mg/ml. Concentration is measured by UV-Vis.

SDS-PAGE



Human PRELP Protein (Fc Tag) SDS-PAGE