

SIX1 antibody

Catalog Number: 115249

Product name

SIX1 antibody

IP: 1:500-1:5000

IF: 1:20-1:200

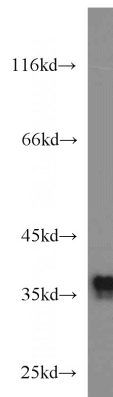
Specificity

Human, Mouse; other species not tested.

Validations

Antibody description

SIX1 Rabbit Polyclonal antibody. Positive IF detected in epithelial tumor cells. Positive IP detected in HEK-293 cells. Positive WB detected in A2780 cells, HEK-293 cells, HepG2 cells, L02 cells, PC-3 cells, SKOV-3 cells. Observed molecular weight by Western-blot: 32-40 kDa



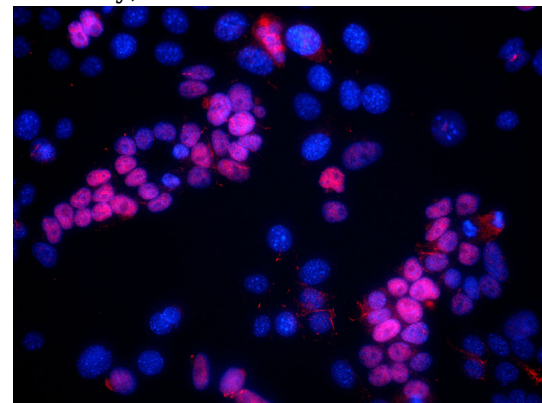
Preparation

This antibody was obtained by immunization of SIX1 recombinant protein (Accession Number: NM_005982). Purification method: Antigen affinity purified.

A2780 cells were subjected to SDS PAGE followed by western blot with Catalog No:115249(SIX1 antibody) at dilution of 1:800

Formulation

PBS with 0.1% sodium azide and 50% glycerol pH 7.3.



Storage

Store at -20°C. DO NOT ALIQUOT

Clonality

Polyclonal

IF result of anti-SIX1(1:50) in p53^{-/-} mammary epithelial tumor cells. Blue: Hoechst nuclear stain, Red: SIX1 stain the mesenchymal cell which have undergone EMT.

Ig Type

Rabbit IgG

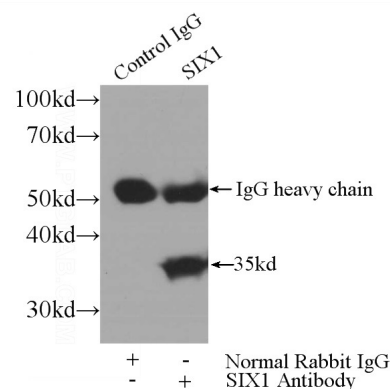
Applications

ELISA, WB, IF, IP

Dilutions

Recommended Dilution:

WB: 1:200-1:2000



IP Result of anti-SIX1 (IP:Catalog No:115249, 3ug;

SIX1 antibody



Catalog Number: 115249

Detection: Catalog No: 115249 1:1000) with

HEK-293 cells lysate 2560ug.