

Anti-C1S antibody



Catalog Number: 175249

Product name

Anti-C1S antibody

Specificity

Human, Mouse, Rat, Horse

Antibody description

Rabbit polyclonal antibody to C1S

Preparation

This antigen of this antibody was klh conjugated synthetic peptide derived from human c1s 251-350/688

Formulation

Liquid, 0.01M TBS(pH7.4) with 1% BSA, 0.03% Proclin300 and 50% Glycerol.

Storage

Store at -20°C for one year. Avoid repeated freeze/thaw cycles. The lyophilized antibody is stable at room temperature for at least one month and for greater than a year when kept at -20°C. When reconstituted in sterile pH 7.4 0.01M PBS or diluent of antibody the antibody is stable for at least two weeks at 2-4°C.

Clonality

Polyclonal

Ig Type

Rabbit IgG

Applications

WB, IHC-P

Dilutions

WB:1:500-2000

IHC-P:1:400-800

Validations

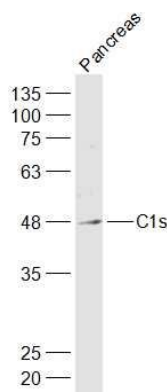
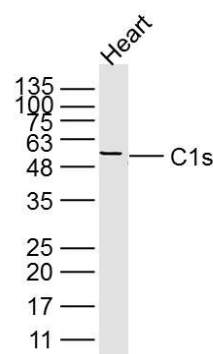


Fig1: Sample:; Pancreas (Mouse) Lysate at 40 ug; Primary: Anti-C1s at 1/1000 dilution; Secondary: IRDye800CW Goat Anti-Rabbit IgG at 1/20000 dilution; Predicted band size: 47/75 kD; Observed



band size: 47 kD

Fig2: Sample: Heart (Mouse) Lysate at 40 ug; Primary: Anti-C1s at 1/300 dilution; Secondary: IRDye800CW Goat Anti-Rabbit IgG at 1/20000 dilution; Predicted band size: 47/75 kD; Observed band size: 55 kD

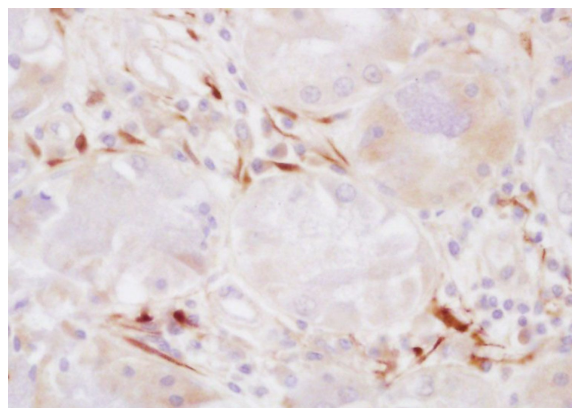


Fig3: Tissue/cell: human lung carcinoma; 4% Paraformaldehyde-fixed and paraffin-embedded;;

Anti-C1S antibody



Catalog Number: 175249

Antigen retrieval: citrate buffer (0.01M, pH 6.0),
Boiling bathing for 15min; Block endogenous
peroxidase by 3% Hydrogen peroxide for 30min;
Blocking buffer (normal goat serum,C-0005) at

37°C for 20 min;; Incubation: Anti-C1S Polyclonal
Antibody, Unconjugated 1:200, overnight at 4°C,
followed by conjugation to the secondary
antibody(SP-0023) and DAB(C-0010) staining