

Anti-TRAF1 antibody



Catalog Number: 100249

Product name

Anti-TRAF1 antibody

Specificity

Human TRAF1

Antibody description

Rabbit polyclonal to TRAF1

Preparation

Produced in rabbits immunized with a synthetic peptide corresponding to the C-terminus of the human TRAF1, and purified by antigen affinity chromatography.

Formulation

0.2 µm filtered solution in PBS

Storage

This antibody can be stored at 2°C-8°C for one month without detectable loss of activity. Antibody products are stable for twelve months from date of receipt when stored at -20°C to -80°C.

Preservative-Free.

Sodium azide is recommended to avoid contamination (final concentration 0.05%-0.1%). It is toxic to cells and should be disposed of

properly. Avoid repeated freeze-thaw cycles.

Clonality

Polyclonal

Ig Type

Rabbit IgG

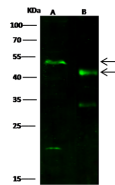
Applications

WB

Dilutions

WB: 10-20 µg/ml

Validations



Items	Lanes	A	B
Sample		Raji (whole cell lysate)	Mouse liver tissue lysate
Sample Volume: (µg/lane)		30	30
Gel	13% SDS-PAGE reducing gel		
Recommended Concentration	10-20 µg/ml		
Secondary Antibody	Dylight 800-labeled Antibody to Rabbit IgG (H+L), at 1:5000 dilution.		
Explanation	Developed using Odyssey imaging system. Predicted band size : 46 kDa Observed band size : 50,46 kDa Additional bands at : 32 kDa and 20 kDa (We are unsure as to the identity of these extra bands. They are possible non-specific bindings).		

TRAF1 Antibody, Rabbit PAb, Antigen Affinity Purified, Western blot