

Anti-Phospho-Tau (Thr181) antibody



Catalog Number: 167549

Product name

Anti-Phospho-Tau (Thr181) antibody

Ig Type

Rabbit IgG

Specificity

Human

Applications

WB, IP

Antibody description

Phospho-Tau (Thr181) antibody

Dilutions

WB: 1/1000

Preparation

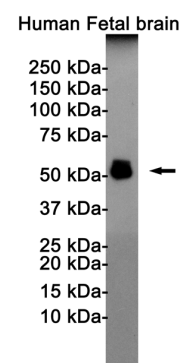
Antigen: A synthetic phosphopeptide corresponding to residues surrounding Thr181 of human Tau

IP: 1/20

Validations

Formulation

Supplied in 50nM Tris-Glycine(pH 7.4), 0.15M NaCl, 40%Glycerol, 0.01% sodium azide and 0.05% BSA.



Storage

Store at -20°C. Stable for 12 months from date of receipt.

Western blot detection of Anti-Tau (phospho T181) antibody in Human Fetal brain cell lysates using Anti-Tau (phospho T181) antibody(1:1000 diluted).Predicted band size:79KDa.Observed band size:50-80KDa.

Clonality

Polyclonal