

Human B7-DC/PD-L2/CD273 (His & Fc Tag) recombinant protein



Catalog Number: 503549

General Information

Gene Name Synonym

Butyrophilin B7-DC

Protein Construction

A DNA sequence encoding the extracellular domain (Met 1-Pro 219) of human PD-L2 (NP_079515.2) was fused with the C-terminal His-tagged Fc region of human IgG1 at the C-terminus.

Organism

Human

Expression Host

Human Cells

QC Testing

Activity

Measured by its binding ability in a functional ELISA. Immobilized human PD1 at 2 µg/ml (100 µl/well) can bind human PD-L2 with a linear ranger of 0.0064-0.16 µg/ml.

Purity

> 97 % as determined by SDS-PAGE

Endotoxin

< 1.0 EU per µg of the protein as determined by the LAL method

Stability

Samples are stable for up to twelve months from date of receipt at -70°C

Predicted N terminal

Leu 20

Molecular Mass

The recombinant human PD-L2/Fc is a disulfide-linked homodimeric protein after proteolytic removal of the signal peptide. The reduced monomer consists of 447 amino acids and predicts a molecular mass of 50.4 kDa. As a result of glycosylation, the apparent molecular mass of rh PD-L2/Fc monomer is approximately 70-80 kDa in SDS-PAGE under reducing conditions.

Formulation

Lyophilized from sterile PBS, pH 7.4

1. 5 % trehalose and mannitol are added as protectants before lyophilization.

2. Please contact us for any concerns or special requirements.

Usage Guide

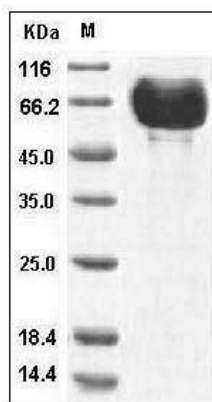
Storage

Store it under sterile conditions at -20°C to -80°C. It is recommended that the protein be aliquoted for optimal storage. Avoid repeated freeze-thaw cycles.

Reconstitution

Adding sterile water, prepare a stock solution of 0.25 mg/ml. Concentration is measured by UV-Vis.

SDS-PAGE



Human B7-DC / PD-L2 / CD273 Protein (His & Fc Tag) SDS-PAGE