

MCL1 antibody

Catalog Number: 112549

Product name

MCL1 antibody

Specificity

Human, Mouse, Rat; other species not tested.

Antibody description

MCL1 Rabbit Polyclonal antibody. Positive IHC detected in human tonsillitis tissue, human cervical cancer tissue, human lung cancer tissue, human pancreas tissue. Positive IP detected in Raji cells. Positive WB detected in Raji cells, A431 cells, HeLa cells, HL-60 cells, human brain tissue, human liver tissue, Jurkat cells, K-562 cells, mouse spleen tissue. Observed molecular weight by Western-blot: 40 kDa

Preparation

This antibody was obtained by immunization of MCL1 recombinant protein (Accession Number: NM_021960). Purification method: Antigen affinity purified.

Formulation

PBS with 0.02% sodium azide and 50% glycerol pH 7.3.

Storage

Store at -20°C. DO NOT ALIQUOT

Clonality

Polyclonal

Ig Type

Rabbit IgG

Applications

ELISA, IHC, WB, IP

Dilutions

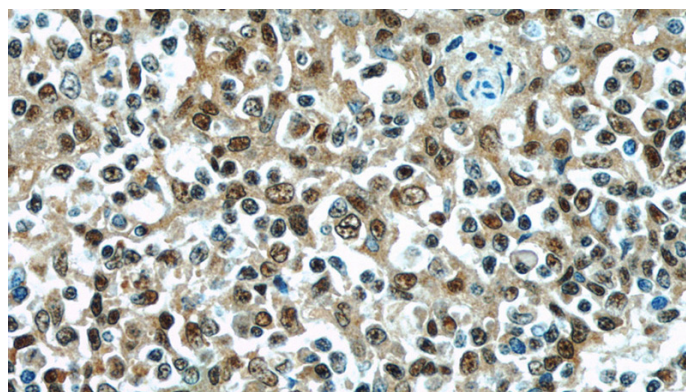
Recommended Dilution:

WB: 1:500-1:5000

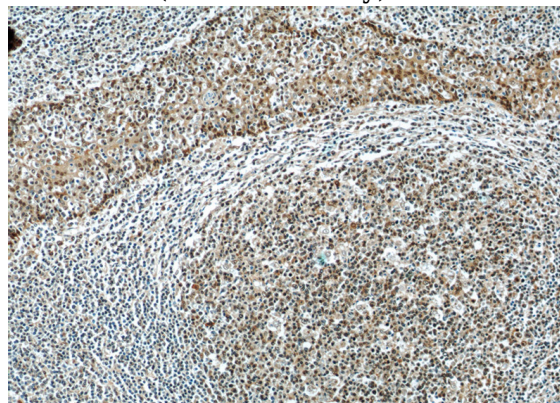
IP: 1:500-1:5000

IHC: 1:20-1:200

Validations



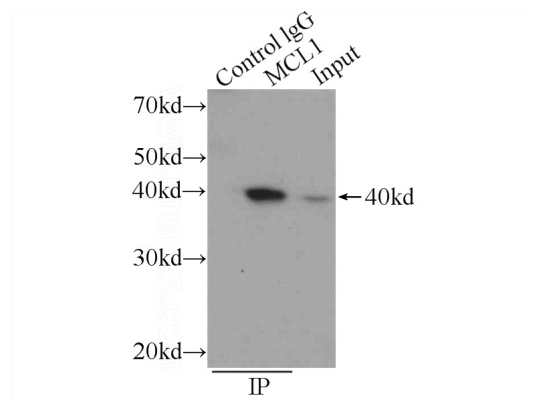
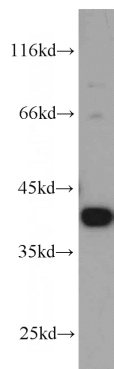
Immunohistochemistry of paraffin-embedded human tonsillitis slide using Catalog No:112549(MCL1 Antibody) at dilution of 1:50



Immunohistochemistry of paraffin-embedded human tonsillitis slide using Catalog No:112549(MCL1 Antibody) at dilution of 1:50

MCL1 antibody

Catalog Number: 112549



Raji cells were subjected to SDS PAGE followed by western blot with Catalog No:112549(MCL1 antibody) at dilution of 1:1000

IP Result of anti-MCL1 (IP:Catalog No:112549, 3ug; Detection:Catalog No:112549 1:1000) with Raji cells lysate 800ug.