

Anti-CD63 Rabbit antibody



Catalog Number: 167149

Product name

Rabbit IgG

Anti-CD63 Rabbit antibody

Applications

Specificity

ICC/IF, WB, IHC-P, ELISA

Human

Dilutions

Antibody description

IF: 1/50-200

CD63 Rabbit polyclonal antibody

WB: 1/500 - 1/2000

Preparation

IHC-p: 1/100-1/300

Antigen: The antiserum was produced against synthesized peptide derived from the Internal region of human CD63. AA range:121-170

ELISA: 1/20000

Validations

Formulation

Liquid in PBS containing 50% glycerol, 0.5% BSA and 0.02% sodium azide.

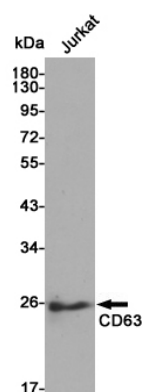
Storage

Store at 4°C short term. Store at -20°C long term. Avoid freeze / thaw cycle.

Clonality

Polyclonal

Ig Type



Western blot detection of CD63 in Jurkat cell lysates using CD63 rabbit pAb (1:500 diluted). Predicted band size: 26 kDa. Observed band size: 26 kDa.