

# WBS15/LAT2 antibody



Catalog Number: 116849

## Product name

WBS15/LAT2 antibody

## Specificity

Human, Mouse; other species not tested.

## Antibody description

WBS15/LAT2 Rabbit Polyclonal antibody. Positive IHC detected in human prostate cancer tissue. Positive WB detected in mouse brain tissue, human brain tissue, human placenta tissue, Raji cells. Observed molecular weight by Western-blot: 27-30 kDa

## Preparation

This antibody was obtained by immunization of WBS15/LAT2 recombinant protein (Accession Number: NM\_032463). Purification method: Antigen affinity purified.

## Formulation

PBS with 0.1% sodium azide and 50% glycerol pH 7.3.

## Storage

Store at -20°C. DO NOT ALIQUOT

## Clonality

Polyclonal

## Ig Type

Rabbit IgG

## Applications

ELISA, IHC, WB

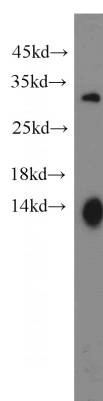
## Dilutions

Recommended Dilution:

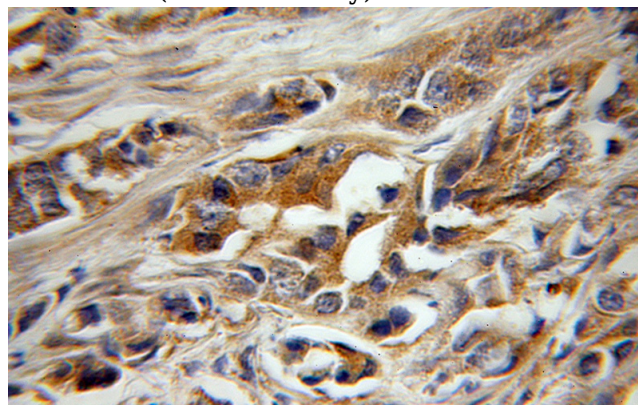
WB: 1:500-1:5000

IHC: 1:20-1:200

## Validations



mouse brain tissue were subjected to SDS PAGE followed by western blot with Catalog No:116849(LAT2 antibody) at dilution of 1:1000



Immunohistochemical of paraffin-embedded human prostate cancer using Catalog No:116849(LAT2 antibody) at dilution of 1:50 (under 10x lens)