

# RSPH9 antibody



Catalog Number: 114849

## Product name

RSPH9 antibody

## Specificity

Human, Mouse, Rat; other species not tested.

## Antibody description

RSPH9 Rabbit Polyclonal antibody. Positive WB detected in mouse testis tissue, NIH/3T3 cells, rat testis tissue. Observed molecular weight by Western-blot: 31-35 kDa

## Preparation

This antibody was obtained by immunization of RSPH9 recombinant protein (Accession Number: NM\_152732). Purification method: Antigen Affinity purified.

## Formulation

PBS with 0.02% sodium azide and 50% glycerol pH 7.3.

## Storage

Store at -20°C. DO NOT ALIQUOT

## Clonality

Polyclonal

## Ig Type

Rabbit IgG

## Applications

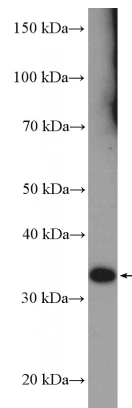
ELISA, WB

## Dilutions

Recommended Dilution:

WB: 1:200-1:2000

## Validations



mouse testis tissue were subjected to SDS PAGE followed by western blot with Catalog No:114849(RSPH9 Antibody) at dilution of 1:600