

KRT15 Polyclonal Antibody



Catalog Number: 163849

Product name

KRT15 Polyclonal Antibody

Specificity

Human, Mouse

Antibody description

Polyclonal antibody to KRT15

Preparation

Antigen: Recombinant protein of human KRT15

Formulation

PBS with 0.02% sodium azide, 50% glycerol, pH7.3.

Storage

Store at -20°C. Avoid freeze / thaw cycles.

Clonality

Polyclonal

Ig Type

Rabbit IgG

Applications

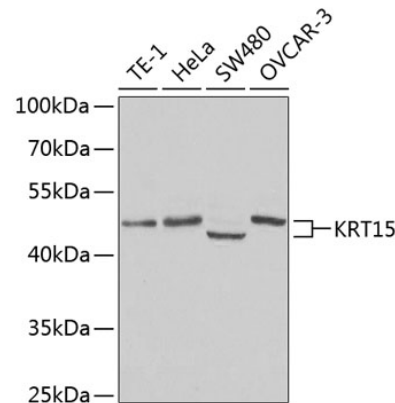
WB, IHC

Dilutions

WB 1:500 - 1:2000

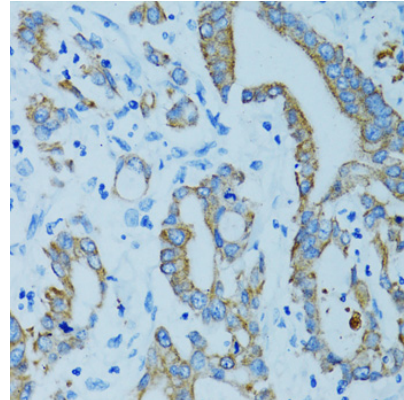
IHC 1:50 - 1:200

Validations



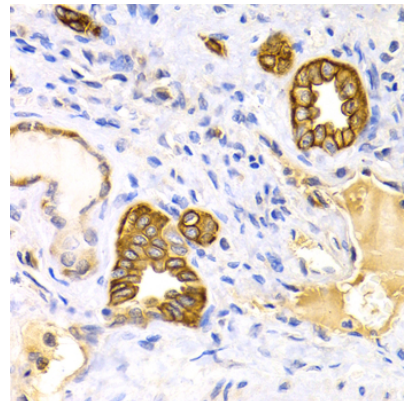
Western blot - KRT15 Polyclonal Antibody

Western blot analysis of extracts of various cell lines, using KRT15 antibody at 1:400 dilution. Secondary antibody: HRP Goat Anti-Rabbit IgG (H+L) at 1:10000 dilution. Lysates/proteins: 25ug per lane. Blocking buffer: 3% nonfat dry milk in TBST.



Immunohistochemistry - KRT15 Polyclonal Antibody

Immunohistochemistry of paraffin-embedded human colon carcinoma using KRT15 antibody at dilution of 1:100 (40x lens).

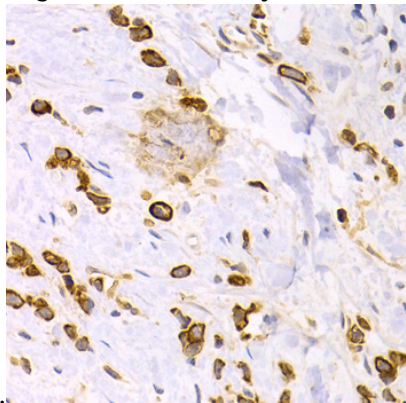


KRT15 Polyclonal Antibody

Catalog Number: 163849

Immunohistochemistry - KRT15 Polyclonal Antibody

Immunohistochemistry of paraffin-embedded human kidney using KRT15 antibody at dilution of



1:200 (40x lens).

Immunohistochemistry - KRT15 Polyclonal Antibody

Immunohistochemistry of paraffin-embedded human gastric cancer using KRT15 antibody at dilution of 1:200 (40x lens).