

MRPS22 antibody

Catalog Number: 112849

Product name

MRPS22 antibody

IP: 1:200-1:1000

IHC: 1:20-1:200

Specificity

Human, Mouse; other species not tested.

Antibody description

MRPS22 Rabbit Polyclonal antibody. Positive IP detected in Jurkat cells. Positive WB detected in Jurkat cells, mouse liver tissue, mouse spleen tissue, rat spleen tissue. Positive IHC detected in human breast cancer tissue. Observed molecular weight by Western-blot: 38 kDa

Preparation

This antibody was obtained by immunization of MRPS22 recombinant protein (Accession Number: NM_020191). Purification method: Antigen affinity purified.

Formulation

PBS with 0.1% sodium azide and 50% glycerol pH 7.3.

Storage

Store at -20°C. DO NOT ALIQUOT

Clonality

Polyclonal

Ig Type

Rabbit IgG

Applications

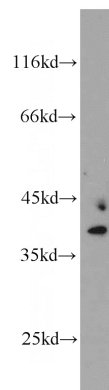
ELISA, IHC, WB, IP

Dilutions

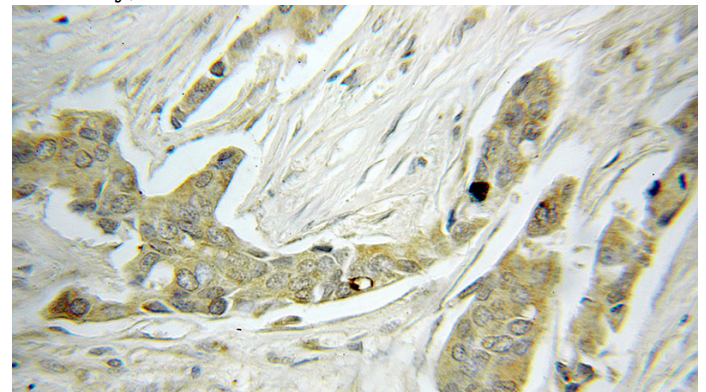
Recommended Dilution:

WB: 1:200-1:1000

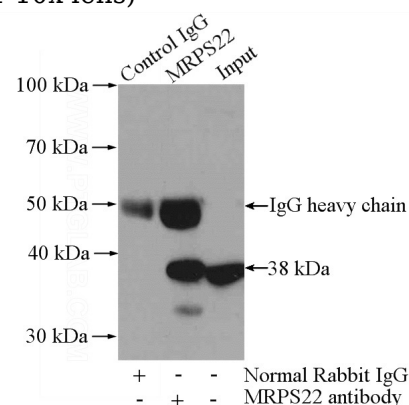
Validations



Jurkat cells were subjected to SDS PAGE followed by western blot with Catalog No:112849(MRPS22 antibody) at dilution of 1:300



Immunohistochemical of paraffin-embedded human breast cancer using Catalog No:112849(MRPS22 antibody) at dilution of 1:50 (under 10x lens)



IP Result of anti-MRPS22 (IP:Catalog No:112849,

MRPS22 antibody



Catalog Number: 112849

4ug; Detection:Catalog No:112849 1:300) with Jurkat cells lysate 2400ug.