

SNAPIN antibody



Catalog Number: 115449

Product name

SNAPIN antibody

Specificity

Human, Mouse, Rat; other species not tested.

Antibody description

SNAPIN Rabbit Polyclonal antibody. Positive WB detected in rat brain tissue, A375 cells, HEK-293 cells, mouse brain tissue. Positive IP detected in mouse brain tissue. Positive IHC detected in human brain tissue, human testis tissue. Positive IF detected in HepG2 cells. Positive FC detected in HepG2 cells. Observed molecular weight by Western-blot: 15-18 kDa

Preparation

This antibody was obtained by immunization of SNAPIN recombinant protein (Accession Number: NM_012437). Purification method: Antigen affinity purified.

Formulation

PBS with 0.1% sodium azide and 50% glycerol pH 7.3.

Storage

Store at -20°C. DO NOT ALIQUOT

Clonality

Polyclonal

Ig Type

Rabbit IgG

Applications

ELISA, IF, WB, IHC, FC, IP

Dilutions

Recommended Dilution:

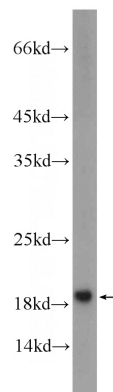
WB: 1:200-1:1000

IP: 1:200-1:1000

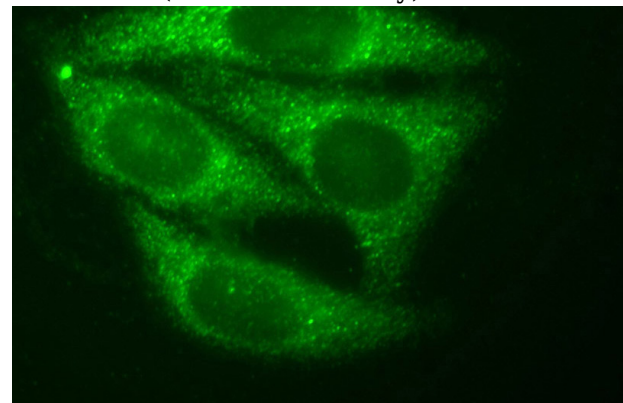
IHC: 1:20-1:200

IF: 1:20-1:200

Validations



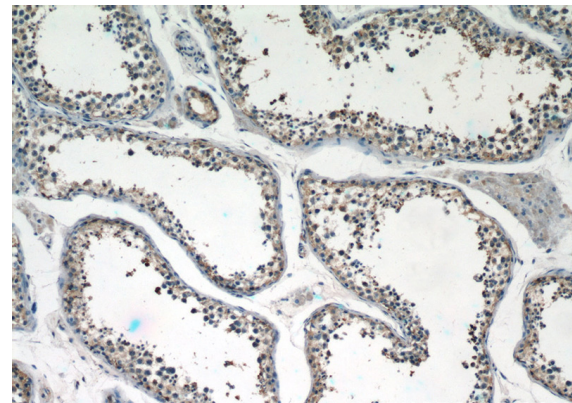
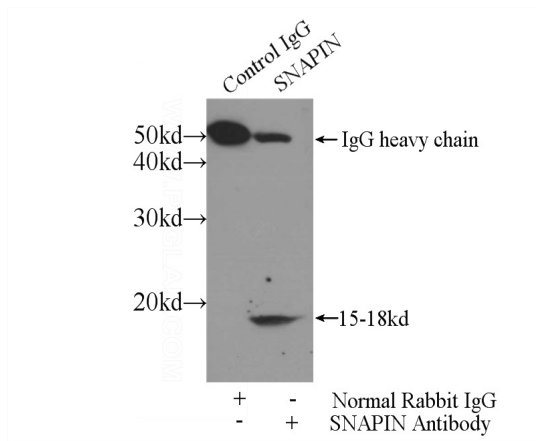
rat brain tissue were subjected to SDS PAGE followed by western blot with Catalog No:115449(SNAPIN Antibody) at dilution of 1:200



Immunofluorescent analysis of HepG2 cells, using SNAPIN antibody Catalog No:115449 at 1:50 dilution and FITC-labeled donkey anti-rabbit IgG

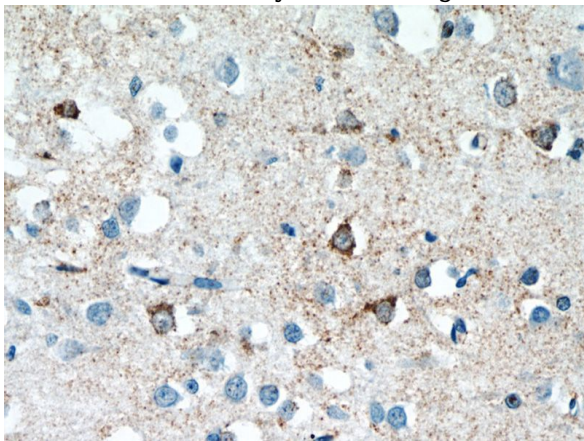
SNAPIN antibody

Catalog Number: 115449



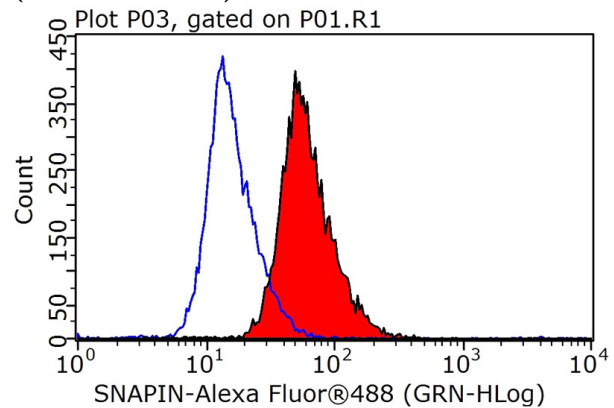
(green).

IP Result of anti-SNAPIN (IP:Catalog No:115449, 5ug; Detection:Catalog No:115449 1:300) with mouse brain tissue lysate 4000ug.



Immunohistochemistry of paraffin-embedded human brain tissue slide using Catalog No:115449(SNAPIN Antibody) at dilution of 1:50 (under 40x lens)

Immunohistochemistry of paraffin-embedded human testis tissue slide using Catalog No:115449(SNAPIN Antibody) at dilution of 1:50 (under 10x lens)



1X10⁶ HepG2 cells were stained with 0.2ug SNAPIN antibody (Catalog No:115449, red) and control antibody (blue). Fixed with 90% MeOH blocked with 3% BSA (30 min). Alexa Fluor 488-conjugated AffiniPure Goat Anti-Rabbit IgG(H+L) with dilution 1:1000.