

General Information

Protein Construction

A DNA sequence encoding the rhesus IL17A (XP_001106391.1) (Met1-Ala155) was expressed.

Organism

Rhesus

Expression Host

Baculovirus-Insect Cells

QC Testing

Purity

> 95 % as determined by SDS-PAGE.

Endotoxin

<1.0 EU per μg protein as determined by the LAL method.

Stability

Samples are stable for up to twelve months from date of receipt at -70°C

Predicted N terminal

Gly 24

Molecular Mass

The recombinant rhesus IL17A consists of 132 amino acids and predicts a molecular mass of 15.1

kDa.

Formulation

Lyophilized from sterile 20 mM Tris, 150 mM NaCl, pH 8.0, 10 % glycerol.

1. 5 % trehalose and mannitol are added as protectants before lyophilization.
2. Please contact us for any concerns or special requirements.

Usage Guide

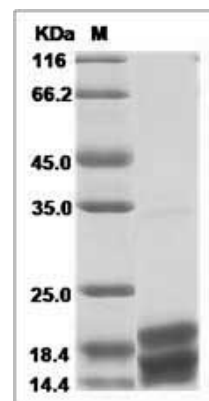
Storage

Store it under sterile conditions at -20°C to -80°C . It is recommended that the protein be aliquoted for optimal storage. Avoid repeated freeze-thaw cycles.

Reconstitution

Adding sterile water, prepare a stock solution of 0.25 mg/ml. Concentration is measured by UV-Vis.

SDS-PAGE



Rhesus IL17 / IL17a Protein