

# Anti-BCL2 / Bcl-2 antibody



Catalog Number: 104449

## Product name

Anti-BCL2 / Bcl-2 antibody

## Immunogen

[Human BCL2 / Bcl-2 \(His Tag\) recombinant protein](#)

## Specificity

Human BCL2 / Bcl-2

## Antibody description

Mouse monoclonal to BCL2 / Bcl-2

## Preparation

This antibody was produced from a hybridoma resulting from the fusion of a mouse myeloma with B cells obtained from a mouse immunized with purified, recombinant Human BCL2 / Bcl-2 (rh BCL2 / Bcl-2; P10415; Met1-Asp211). The IgG fraction of the cell culture supernatant was purified by Protein A affinity chromatography.

## Formulation

0.2 µm filtered solution in PBS with 5% trehalose

## Storage

This antibody can be stored at 2°C-8°C for one month without detectable loss of activity. Antibody products are stable for twelve months from date of receipt when stored at -20°C to -80°C.

Preservative-Free.

Sodium azide is recommended to avoid contamination (final concentration 0.05%-0.1%). It is toxic to cells and should be disposed of properly. Avoid repeated freeze-thaw cycles.

## Clonality

Monoclonal

## Ig Type

Mouse IgG1

## Applications

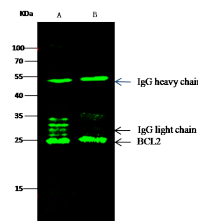
WB, IP

## Dilutions

WB: 3-5 µg/mL

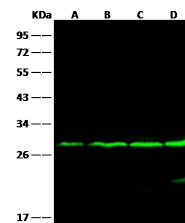
IP: 2-8 µg/mg of lysate

## Validations



Items	Lanes	A	B
Sample (whole cell lysate)		Jurkat	K562
Sample quantity		0.5 mg	
IP antibody quantity		2 µg	
Protein G agarose		15 µl of 50% Protein G Agarose	
Gel		13% SDS-PAGE/reducing gel	
Primary antibody		BCL2 antibody at 2 µg/ml [Cat# 10847-MM06]	
Secondary antibody		Dylight 800-labeled antibody to mouse IgG (H+L), at 1:7500 dilution.	

BCL2 / Bcl-2 Antibody, Mouse MAb,



Items	Lanes	A	B	C	D
Sample (whole cell lysate)		HeLa	Jurkat	U937	HL-60
Sample Volume (µg/lane)		30			
Gel		13% SDS-PAGE reducing gel			
Recommended Concentration		3-5 µg/ml			
Secondary Antibody		Dylight 800-labeled Antibody To Mouse IgG (H+L), at 1:7500 dilution.			

Immunoprecipitation

BCL2 / Bcl-2 Antibody, Mouse MAb, Western blot