

# Sam68 antibody

Catalog Number: 115049

## Product name

Sam68 antibody

WB: 1:500-1:5000

IP: 1:500-1:5000

## Specificity

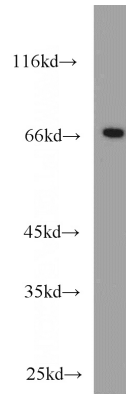
Human, Mouse, Rat; other species not tested.

IHC: 1:20-1:200

## Antibody description

Sam68 Rabbit Polyclonal antibody. Positive WB detected in HeLa cells, HEK-293 cells, mouse brain tissue, NIH/3T3 cells. Positive IP detected in HeLa cells. Positive FC detected in MCF-7 cells. Positive IHC detected in human breast cancer tissue. Observed molecular weight by Western-blot: 68 kDa

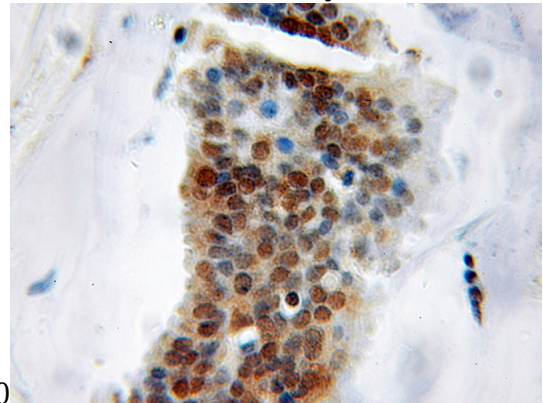
## Validations



## Preparation

This antibody was obtained by immunization of Sam68 recombinant protein (Accession Number: NM\_006559). Purification method: Antigen affinity purified.

HeLa cells were subjected to SDS PAGE followed by western blot with Catalog No:115049(KHDRBS1 antibody) at dilution of



## Formulation

PBS with 0.1% sodium azide and 50% glycerol pH 7.3.

## Storage

Store at -20°C. DO NOT ALIQUOT

1:1000

## Clonality

Polyclonal

Immunohistochemical of paraffin-embedded human breast cancer using Catalog No:115049(KHDRBS1 antibody) at dilution of 1:50

## Ig Type

Rabbit IgG

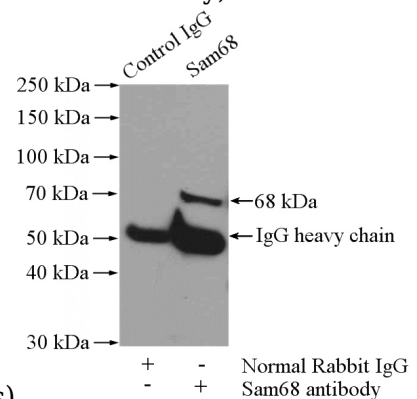
## Applications

ELISA, WB, IHC, FC, IP

## Dilutions

Recommended Dilution:

(under 10x lens)

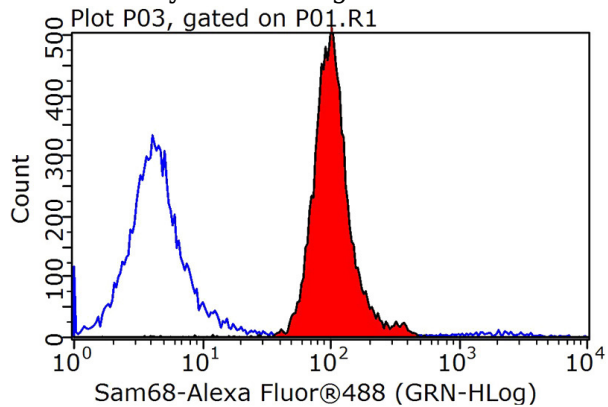


# Sam68 antibody



Catalog Number: 115049

IP Result of anti-Sam68 (IP:Catalog No:115049, 4ug; Detection:Catalog No:115049 1:1000) with HeLa cells lysate 1200ug.



1X10<sup>6</sup> MCF-7 cells were stained with 0.2ug Sam68 antibody (Catalog No:115049, red) and control antibody (blue). Fixed with 90% MeOH blocked with 3% BSA (30 min). Alexa Fluor 488-conjugated AffiniPure Goat Anti-Rabbit IgG(H+L) with dilution 1:1000.