

Anti-MTSS1 antibody



Catalog Number: 105049

Product name

Anti-MTSS1 antibody

Immunogen

[Human MTSS1 \(aa1-250, His & MBP Tag\) recombinant protein](#)

Specificity

Human MTSS1

Antibody description

Rabbit polyclonal to MTSS1

Preparation

Produced in rabbits immunized with purified, recombinant Human MTSS1 (rh MTSS1; EAW92073.1; Met1-Ser250). MTSS1 specific IgG was purified by Human MTSS1 affinity chromatography.

Formulation

0.2 µm filtered solution in PBS

Storage

This antibody can be stored at 2°C-8°C for one month without detectable loss of activity. Antibody products are stable for twelve months from date of receipt when stored at -20°C to -80°C.

Preservative-Free.

Sodium azide is recommended to avoid contamination (final concentration 0.05%-0.1%). It is toxic to cells and should be disposed of

properly. Avoid repeated freeze-thaw cycles.

Clonality

Polyclonal

Ig Type

Rabbit IgG

Applications

ELISA, WB

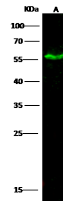
Dilutions

WB: 10-20 µg/mL

ELISA: 0.1-0.2 µg/mL

This antibody can be used at 0.1-0.2 µg/mL with the appropriate secondary reagents to detect Human MTSS1. The detection limit for Human MTSS1 is < 0.039 ng/well.

Validations



Lanes	A
Sample (whole cell lysate)	NIH-3T3
Sample Volume (µg/lane)	30
Gel	13% SDS-PAGE reducing gel
Recommended Concentration	10-20 µg/ml
Secondary Antibody	Dylight 800 labeled Antibody to Rabbit IgG (1:1), at 1:5000 dilution.
Developed using Odyssey imaging system.	
Explanation	Predicted band size : 50 kDa Observed band size : 56 kDa

MTSS1 Antibody, Rabbit PAb, Antigen Affinity Purified, Western blot