

# CUGBP1 antibody

Catalog Number: 109739

## Product name

CUGBP1 antibody

WB: 1:200-1:2000

IP: 1:200-1:2000

## Specificity

Human, Mouse, Rat; other species not tested.

IHC: 1:20-1:200

IF: 1:20-1:200

## Antibody description

CUGBP1 Rabbit Polyclonal antibody. Positive IHC detected in human breast cancer tissue, human skin cancer tissue, human testis tissue. Positive IF detected in HeLa cells. Positive WB detected in HeLa cells, HL-60 cells, HT-1080 cells, NIH/3T3 cells. Positive IP detected in HeLa cells. Observed molecular weight by Western-blot: 51-55kd

## Preparation

This antibody was obtained by immunization of CUGBP1 recombinant protein (Accession Number: XM\_011519859). Purification method: Antigen affinity purified.

## Formulation

PBS with 0.02% sodium azide and 50% glycerol pH 7.3.

## Storage

Store at -20°C. DO NOT ALIQUOT

## Clonality

Polyclonal

## Ig Type

Rabbit IgG

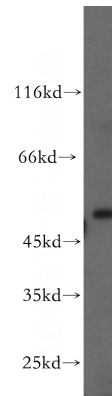
## Applications

ELISA, WB, IHC, IF, IP

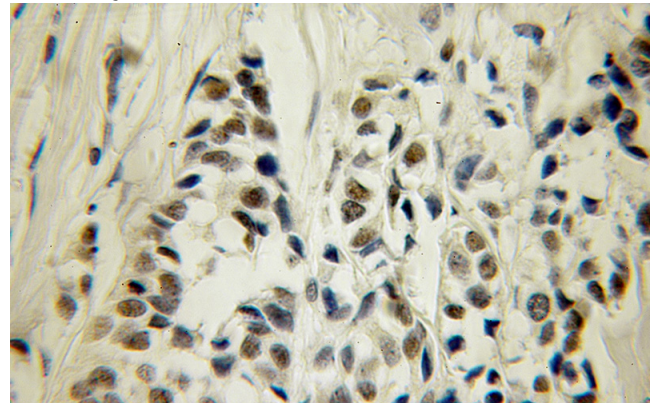
## Dilutions

Recommended Dilution:

## Validations



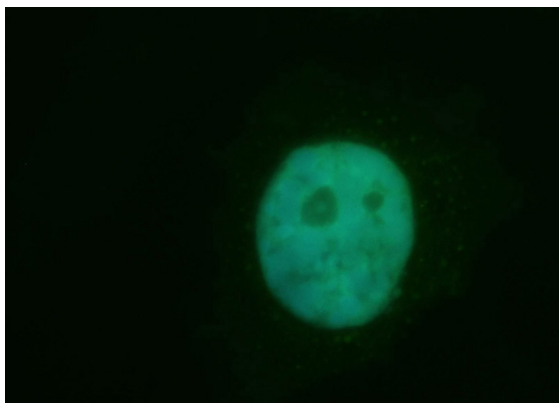
HeLa cells were subjected to SDS PAGE followed by western blot with Catalog No:109739(CUGBP1 antibody) at dilution of 1:200



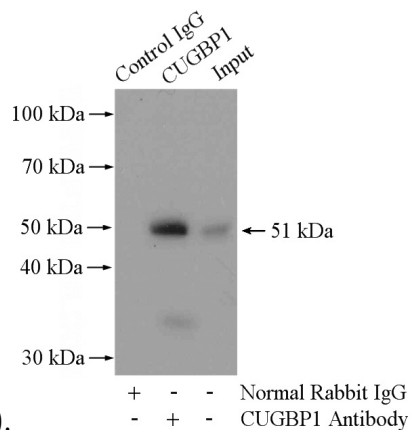
Immunohistochemical of paraffin-embedded human breast cancer using Catalog No:109739(CUGBP1 antibody) at dilution of 1:100 (under 10x lens)

# CUGBP1 antibody

Catalog Number: 109739



Immunofluorescent analysis of HeLa cells, using CUGBP1 antibody Catalog No:109739 at 1:50 dilution and FITC-labeled donkey anti-rabbit IgG (green). Blue pseudocolor = DAPI (fluorescent



DNA dye).

IP Result of anti-CUGBP1 (IP:Catalog No:109739, 4ug; Detection:Catalog No:109739 1:500) with HeLa cells lysate 3200ug.