

# Anti-NOTCH3 Rabbit antibody



Catalog Number: 166739

## Product name

Anti-NOTCH3 Rabbit antibody

## Specificity

Human, Mouse, Rat

## Antibody description

NOTCH3 Rabbit polyclonal antibody

## Preparation

Antigen: A synthetic peptide corresponding to a sequence within amino acids 2200 to the C-terminus of human NOTCH3

(NP\_000426.2).TPVSPQERPPPYLAVPGHGEEYPAA  
GAHSSPPKARFLRVPSEHPYLTPSPESPEHWASPS  
PPSLSDWSESTPSPATATGAMATTTGALPAQPLPLS  
VPSSLAQAQTQLGPQPEVTPKRQVLA

## Formulation

PBS with 0.02% sodium azide, 50% glycerol, pH 7.3.

## Storage

Store at -20°C. Avoid freeze / thaw cycles.

## Clonality

Polyclonal

## Ig Type

Rabbit IgG

## Applications

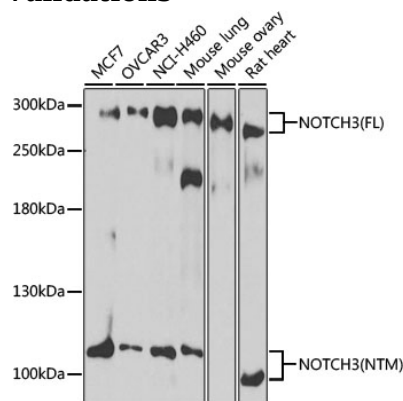
WB

## Dilutions

1:500

1:2000

## Validations



Western blot - NOTCH3 Polyclonal Antibody. Western blot analysis of extracts of various cell lines, using NOTCH3 antibody at 1:1000 dilution. Secondary antibody: HRP Goat Anti-Rabbit IgG at 1:10000 dilution. Lysates/proteins: 25ug per lane. Blocking buffer: 3% nonfat dry milk in TBST. Exposure time: 5s.