

Mouse E-Selectin/CD62e/SELE (His Tag) recombinant protein



Catalog Number: 503739

General Information

Gene Name Synonym

CD62 antigen-like family member E; Endothelial leukocyte adhesion molecule 1; Leukocyte-endothelial cell adhesion molecule 2

Protein Construction

A DNA sequence encoding the mouse SELE (NP_035475.1) (Met1-Pro564) was expressed with a C-terminal polyhistidine tag.

Organism

Mouse

Expression Host

Human Cells

QC Testing

Activity

Measured by the ability of the immobilized protein to support the adhesion of U937 human histiocytic lymphoma cells.

When 5×10^4 cells/well are added to mouse E-Selectin coated plates (2 $\mu\text{g}/\text{mL}$ with 100 $\mu\text{L}/\text{well}$), approximately 30%-60% cells will adhere for 1 hour incubation at 37°C.

Purity

> 95 % as determined by SDS-PAGE

Endotoxin

< 1.0 EU per μg of the protein as determined by the LAL method

Stability

Samples are stable for up to twelve months from date of receipt at -70°C

Predicted N terminal

Trp 29

Molecular Mass

The recombinant mouse SELE comprises 547 amino acids and has a predicted molecular mass of 60 kDa. The apparent molecular mass of the protein is approximately 70-80 kDa in SDS-PAGE under reducing conditions due to glycosylation.

Formulation

Lyophilized from sterile PBS, pH 7.4

1. 5 % trehalose and mannitol are added as protectants before lyophilization.

2. Please contact us for any concerns or special requirements.

Usage Guide

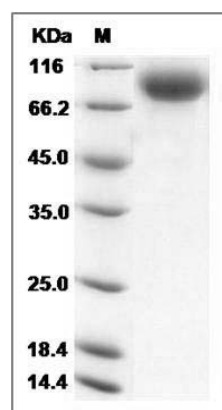
Storage

Store it under sterile conditions at -20°C to -80°C. It is recommended that the protein be aliquoted for optimal storage. Avoid repeated freeze-thaw cycles.

Reconstitution

Adding sterile water, prepare a stock solution of 0.25 mg/ml. Concentration is measured by UV-Vis.

SDS-PAGE



Mouse E-Selectin / CD62e / SELE Protein (His Tag) SDS-PAGE