

General Information

Gene Name Synonym

CD121 antigen-like family member B; CDw121b; IL-1 type II receptor; Interleukin-1 receptor beta; Interleukin-1 receptor type II; Interleukin-1 receptor type 2, membrane form; Interleukin-1 receptor type 2, soluble form

Protein Construction

A DNA sequence encoding the human IL1R2 (NP_004624.1) (Met 1-Glu 343) was expressed with five amino acids (DDDDK) at the C-terminus.

Organism

Human

Expression Host

Human Cells

QC Testing

Activity

Immobilized human IL1R2 at 10 µg/ml (100 µl/well) can bind biotinylated human IL1B-His (cat:501519), The EC₅₀ of biotinylated human IL1B-His (cat:501519) is 0.14-0.34 µg/ml.

Purity

> 95 % as determined by SDS-PAGE

Endotoxin

< 1.0 EU per µg of the protein as determined by the LAL method

Stability

Samples are stable for up to twelve months from date of receipt at -70°C

Predicted N terminal

Phe 14

Molecular Mass

The recombinant human IL1R2 consists of 336 amino acids and predicts a molecular mass of 38.4 KDa. It migrates as an approximately 49 KDa band in SDS-PAGE under reducing conditions.

Formulation

Lyophilized from sterile PBS, pH 7.4.

1. 5 % trehalose and mannitol are added as protectants before lyophilization.

2. Please contact us for any concerns or special requirements.

Usage Guide

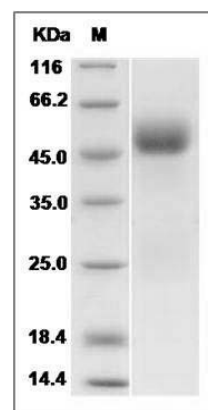
Storage

Store it under sterile conditions at -20°C to -80°C. It is recommended that the protein be aliquoted for optimal storage. Avoid repeated freeze-thaw cycles.

Reconstitution

Adding sterile water, prepare a stock solution of 0.25 mg/ml. Concentration is measured by UV-Vis.

SDS-PAGE



Human IL1R2 / IL1RB / CD121b Protein SDS-PAGE