

NSE antibody

Catalog Number: 107339

Product name

NSE antibody

IHC: 1:20-1:200

IF: 1:20-1:200

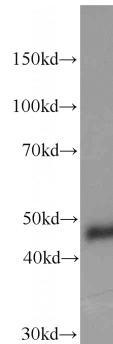
Specificity

Human, Mouse, Rat; other species not tested.

Validations

Antibody description

NSE Mouse Monoclonal antibody. Positive IF detected in SH-SY5Y cells. Positive IHC detected in human brain tissue. Positive WB detected in SH-SY5Y cells, C6 cells, U-251 cells. Observed molecular weight by Western-blot: 47 kDa



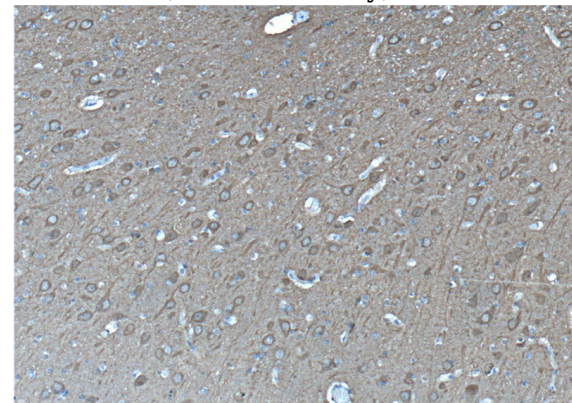
Preparation

This antibody was obtained by immunization of NSE recombinant protein (Accession Number: NM_001975). Purification method: Protein G purified.

SH-SY5Y cells were subjected to SDS PAGE followed by western blot with Catalog No:107339(ENO2 Antibody) at dilution of 1:1000

Formulation

PBS with 0.02% sodium azide and 50% glycerol pH 7.3.



Storage

Store at -20°C. DO NOT ALIQUOT

Clonality

Monoclonal

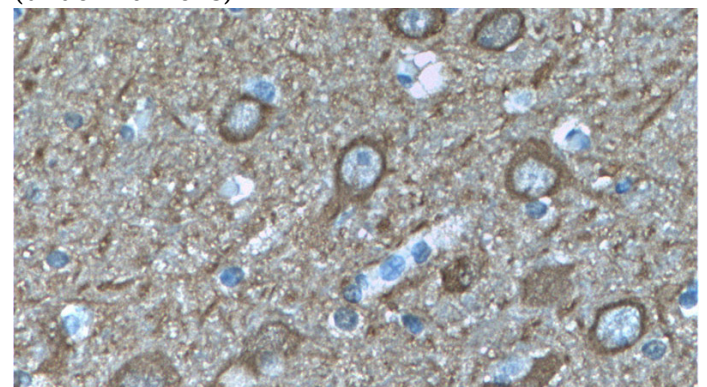
Immunohistochemistry of paraffin-embedded human brain tissue slide using Catalog No:107339(ENO2 Antibody) at dilution of 1:200 (under 10x lens)

Ig Type

Mouse IgG1

Applications

ELISA, WB, IHC, IF



Dilutions

Recommended Dilution:

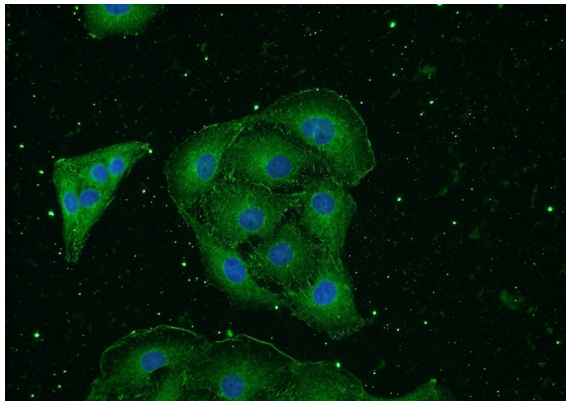
WB: 1:500-1:5000

Immunohistochemistry of paraffin-embedded

NSE antibody

Catalog Number: 107339

human brain tissue slide using Catalog No:107339(ENO2 Antibody) at dilution of 1:200 (under 40x lens)



Immunofluorescent analysis of SH-SY5Y cells using Catalog No:107339(ENO2 Antibody) at dilution of 1:50 and Alexa Fluor 488-conjugated AffiniPure Goat Anti-Mouse IgG(H+L)