

# TRAPA/SSR1 antibody



Catalog Number: 116339

## Product name

TRAPA/SSR1 antibody

## Specificity

Human; other species not tested.

## Antibody description

TRAPA/SSR1 Rabbit Polyclonal antibody. Positive WB detected in human liver tissue. Positive IHC detected in human ovary tumor tissue. Observed molecular weight by Western-blot: 34kd

## Preparation

This antibody was obtained by immunization of TRAPA/SSR1 recombinant protein (Accession Number: NM\_003144). Purification method: Antigen affinity purified.

## Formulation

PBS with 0.1% sodium azide and 50% glycerol pH 7.3.

## Storage

Store at -20°C. DO NOT ALIQUOT

## Clonality

Polyclonal

## Ig Type

Rabbit IgG

## Applications

ELISA, WB, IHC

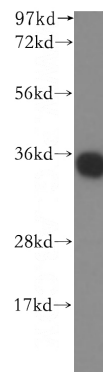
## Dilutions

Recommended Dilution:

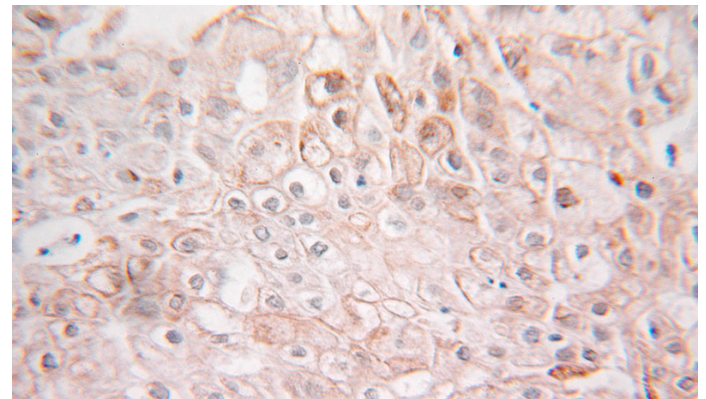
WB: 1:200-1:1000

IHC: 1:20-1:200

## Validations



human liver tissue were subjected to SDS PAGE followed by western blot with Catalog No:116339(TRAPA, SSR1 antibody) at dilution of 1:250



Immunohistochemical of paraffin-embedded human ovary tumor using Catalog No:116339(TRAPA, SSR1 antibody) at dilution of 1:100 (under 25x lens)