

LRRTM1 antibody



Catalog Number: 112339

Product name

LRRTM1 antibody

Specificity

Human, Mouse, Rat; other species not tested.

Antibody description

LRRTM1 Rabbit Polyclonal antibody. Positive IHC detected in human testis tissue, human brain tissue. Positive WB detected in HEK-293 cells, HeLa cells, mouse brain tissue. Observed molecular weight by Western-blot: 59kd

Preparation

This antibody was obtained by immunization of LRRTM1 recombinant protein (Accession Number: XM_017003986). Purification method: Antigen affinity purified.

Formulation

PBS with 0.02% sodium azide and 50% glycerol pH 7.3.

Storage

Store at -20°C. DO NOT ALIQUOT

Clonality

Polyclonal

Ig Type

Rabbit IgG

Applications

ELISA, WB, IHC

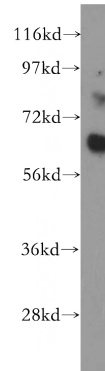
Dilutions

Recommended Dilution:

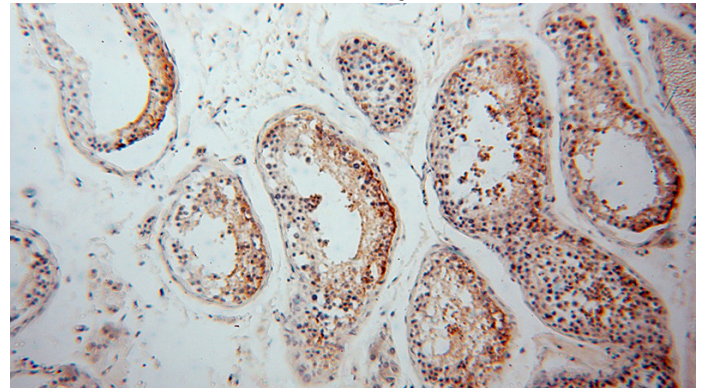
WB: 1:500-1:5000

IHC: 1:20-1:200

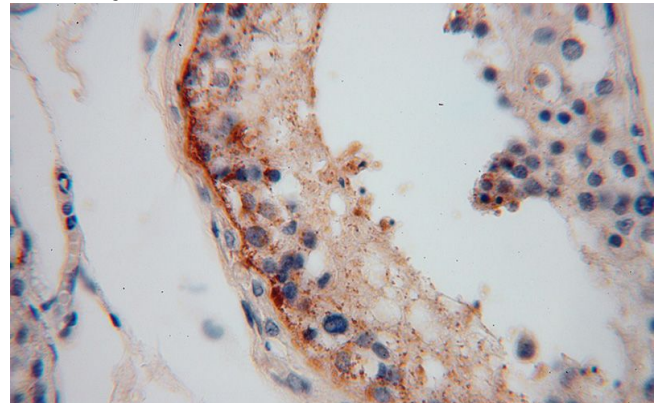
Validations



HEK-293 cells were subjected to SDS PAGE followed by western blot with Catalog No:112339(LRRTM1 antibody) at dilution of 1:400



Immunohistochemical of paraffin-embedded human testis using Catalog No:112339(LRRTM1 antibody) at dilution of 1:100 (under 10x lens)



Immunohistochemical of paraffin-embedded human testis using Catalog No:112339(LRRTM1 antibody) at dilution of 1:100 (under 40x lens)