

Haptoglobin antibody



Catalog Number: 111339

Product name

Haptoglobin antibody

IP: 1:200-1:2000

IHC: 1:20-1:200

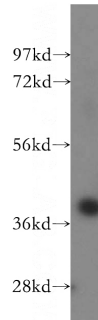
Specificity

Human, Mouse, Rat; other species not tested.

Validations

Antibody description

Haptoglobin Rabbit Polyclonal antibody. Positive WB detected in HEK-293 cells, human liver tissue. Positive IP detected in HepG2 cells. Positive IHC detected in human liver tissue, mouse liver tissue. Observed molecular weight by Western-blot: 42 kDa



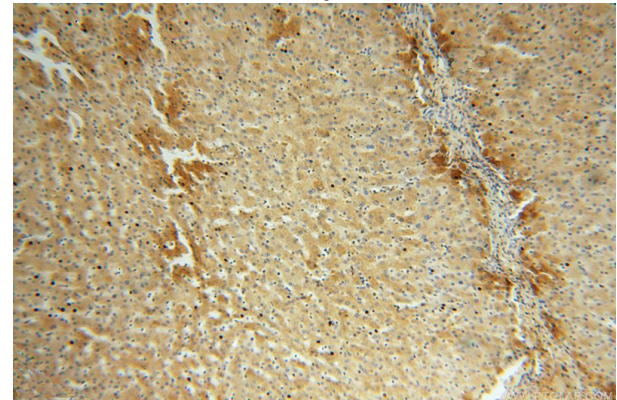
Preparation

This antibody was obtained by immunization of Haptoglobin recombinant protein (Accession Number: BC058031). Purification method: Antigen affinity purified.

HEK-293 cells were subjected to SDS PAGE followed by western blot with Catalog No:111339(HP antibody) at dilution of 1:500

Formulation

PBS with 0.02% sodium azide and 50% glycerol pH 7.3.



Storage

Store at -20°C. DO NOT ALIQUOT

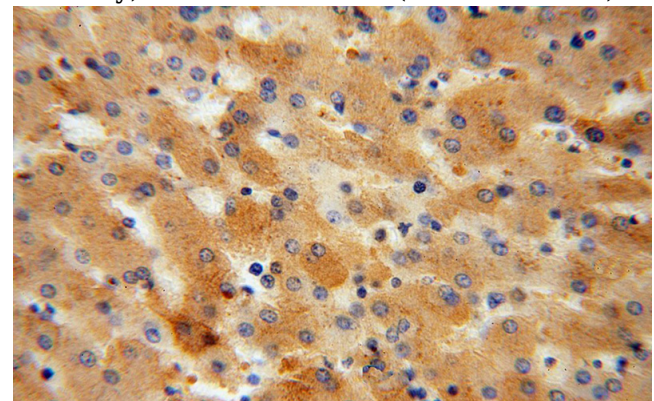
Clonality

Polyclonal

Immunohistochemical of paraffin-embedded human liver using Catalog No:111339(HP antibody) at dilution of 1:50 (under 10x lens)

Ig Type

Rabbit IgG



Applications

ELISA, WB, IHC, IP

Dilutions

Recommended Dilution:

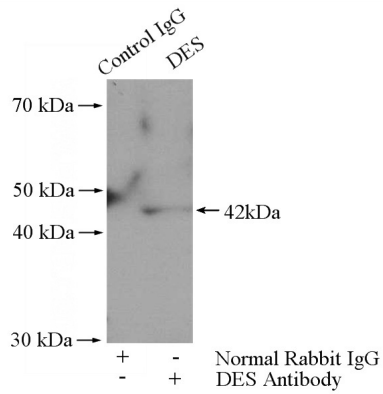
WB: 1:500-1:5000

Immunohistochemical of paraffin-embedded human liver using Catalog No:111339(HP

Haptoglobin antibody

Catalog Number: 111339

antibody) at dilution of 1:50 (under 40x lens)



IP Result of anti-HP (IP:Catalog No:111339, 4ug;
Detection:Catalog No:111339 1:500) with HepG2
cells lysate 2000ug.