

# Human PYM1/PYM/WIBG (His tag) recombinant protein



Catalog Number: 518639

## General Information

### Gene Name Synonym

Partner of Y14 and Mago, Protein Wibg Homolog, WIBG, PYM

### Protein Construction

A DNA sequence encoding the Human PYM1/PYM/WIBG Met1-Leu204 is expressed with a 6His tag at the C-terminus.

### Organism

Human

### Expression Host

E. coli

## QC Testing

### Purity

>95% as determined by SDS-PAGE.

### Endotoxin

<1.0 EU per  $\mu\text{g}$  protein as determined by the LAL method.

## Stability

Store for up to 6 months at  $-20^{\circ}\text{C}$

## Formulation

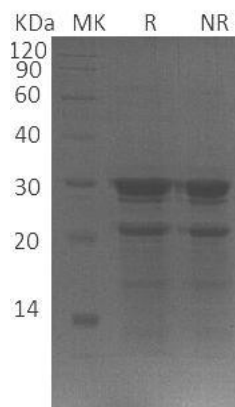
Supplied as a  $0.2\ \mu\text{m}$  filtered solution of 20mM TrisHCl, 100mM NaCl, 10% Glycerol, pH 8.0.

## Usage Guide

### Storage

Store at  $<-20^{\circ}\text{C}$ , minimize freeze-thaw cycles.

## SDS-PAGE



Human PYM1/PYM/WIBG (His tag) recombinant protein