

Anti-CD31 Rabbit antibody



Catalog Number: 168639

Product name

Anti-CD31 Rabbit antibody

Specificity

Human

Antibody description

CD31 Rabbit monoclonal antibody

Preparation

Antigen: A synthetic peptide of human CD31

Formulation

Supplied in 50nM Tris-Glycine(pH 7.4), 0.15M NaCl, 40%Glycerol, 0.01% sodium azide and 0.05% BSA.

Storage

Store at 4°C short term. Aliquot and store at -20°C long term. Avoid freeze / thaw cycle.

Clonality

Monoclonal

Ig Type

Rabbit IgG

Applications

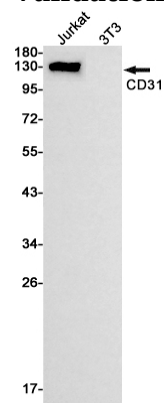
WB, FC

Dilutions

WB: 1/1000

FC: 1/20

Validations



Western blot detection of CD31 in Jurkat,3T3 cell lysates using CD31 Rabbit mAb(1:1000 diluted).Predicted band size:83kDa.Observed band size:130kDa.