

Anti-PDGFA antibody

Catalog Number: 175639

Product name

Anti-PDGFA antibody

Specificity

Human, Mouse, Rat, Rabbit

Antibody description

Rabbit polyclonal antibody to PDGFA

Preparation

This antigen of this antibody was klh conjugated synthetic peptide derived from the missle of human pdgf-a 125-170/211

Formulation

Liquid, 0.01M TBS(pH7.4) with 1% BSA, 0.03% Proclin300 and 50% Glycerol.

Storage

Store at -20°C for one year. Avoid repeated freeze/thaw cycles. The lyophilized antibody is stable at room temperature for at least one month and for greater than a year when kept at -20°C. When reconstituted in sterile pH 7.4 0.01M PBS or diluent of antibody the antibody is stable for at least two weeks at 2-4°C.

Clonality

Polyclonal

Ig Type

Rabbit IgG

Applications

WB, FC

Dilutions

WB:1:500-2000

FC:1µg/Test

Validations

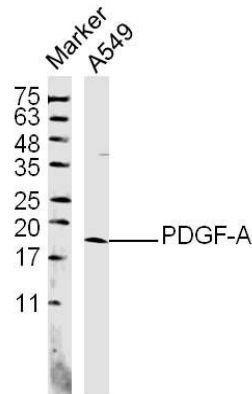


Fig1: Sample: A549 (human)Cell Lysate at 40 ug; Primary: Anti- PDGF-A at 1/300 dilution; Secondary: IRDye800CW Goat Anti-Rabbit IgG at 1/20000 dilution; Predicted band size: 14 kD; Observed band size: 18 kD

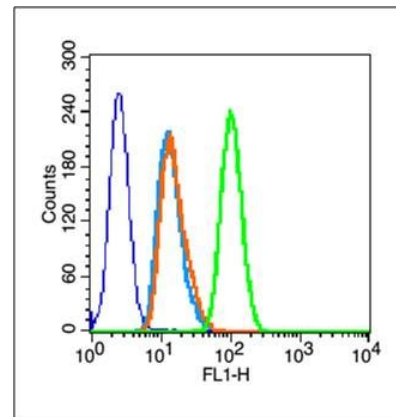


Fig2: Blank control (blue line): A431 cells (blue).; Primary Antibody (green line): Rabbit Anti-PDGFA antibody ; Dilution: 1µg /10⁶ cells;; Isotype Control Antibody (orange line): Rabbit IgG .; Secondary Antibody (white blue line): Goat anti-rabbit IgG-FITC; Dilution: 1µg /test.; Protocol; The cells were fixed with 70% methanol (Overnight at 4°C) and then permeabilized with 90% ice-cold methanol for 20 min at -20°C. Cells stained with Primary Antibody for 30 min at room temperature. The cells were then incubated in 1 X PBS/2%BSA/10% goat serum to block non-specific protein-protein interactions followed by the antibody for 15 min at room temperature. The secondary antibody used for 40 min at room temperature. Acquisition of 20,000 events was

Anti-PDGFA antibody



Catalog Number: 175639

Fig3: Sample: placenta (Mouse) Lysate at 40 ug;
Primary: Anti-PDGF-A at 1/300 dilution;
Secondary: IRDye800CW Goat Anti-Rabbit IgG at
1/20000 dilution; Predicted band size: 14 kD;
Observed band size: 17 kD

