

# RGR antibody

Catalog Number: 114639

## Product name

RGR antibody

IP: 1:200-1:1000

IHC: 1:20-1:200

## Specificity

Human, Mouse, Rat; other species not tested.

## Antibody description

RGR Rabbit Polyclonal antibody. Positive IHC detected in human prostate cancer tissue. Positive FC detected in PC-3 cells. Positive IP detected in PC-3 cells. Positive WB detected in human heart tissue. Observed molecular weight by Western-blot: 32 kDa, 26 kDa

## Preparation

This antibody was obtained by immunization of RGR recombinant protein (Accession Number: BC008094). Purification method: Antigen affinity purified.

## Formulation

PBS with 0.1% sodium azide and 50% glycerol pH 7.3.

## Storage

Store at -20°C. DO NOT ALIQUOT

## Clonality

Polyclonal

## Ig Type

Rabbit IgG

## Applications

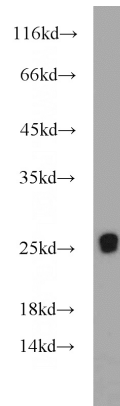
ELISA, IHC, WB, FC, IP

## Dilutions

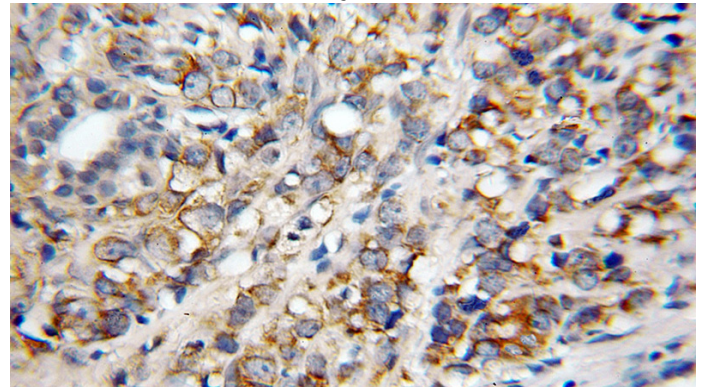
Recommended Dilution:

WB: 1:200-1:2000

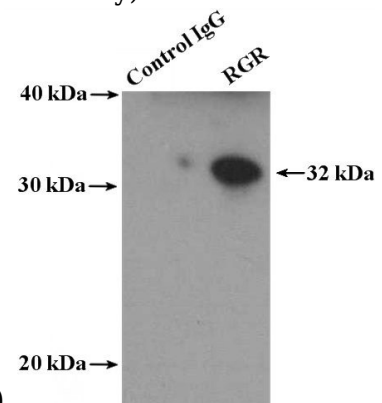
## Validations



human heart tissue were subjected to SDS PAGE followed by western blot with Catalog No:114639(RGR antibody) at dilution of 1:500



Immunohistochemical of paraffin-embedded human prostate cancer using Catalog No:114639(RGR antibody) at dilution of 1:100



(under 10x lens)

IP Result of anti-RGR (IP:Catalog No:114639, 4ug; Detection:Catalog No:114639 1:300) with PC-3

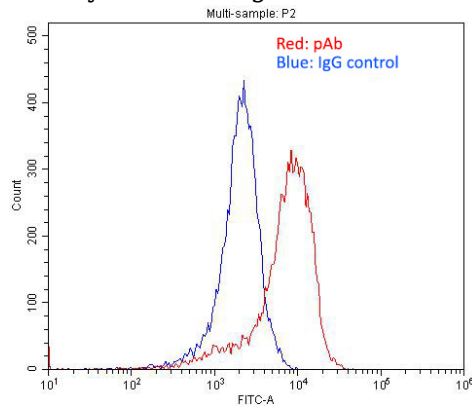
# RGR antibody



Catalog Number: 114639

---

cells lysate 4000ug.



1X10<sup>6</sup> PC-3 cells were stained with 0.2ug RGR antibody (Catalog No:114639, red) and control antibody (blue). Fixed with 4% PFA blocked with 3% BSA (30 min). Alexa Fluor 488-conjugated AffiniPure Goat Anti-Rabbit IgG(H+L) with dilution 1:1500.