

Human CD3e/CD3 epsilon (His Tag) recombinant protein



Catalog Number: 503639

General Information

Gene Name Synonym

T-cell surface antigen T3/Leu-4 epsilon chain

Protein Construction

A DNA sequence encoding the extracellular domain (Met 1-Asp 126) of human CD3E (NP_000724.1) precursor was fused with a polyhistidine tag at the C-terminus.

Organism

Human

Expression Host

Human Cells

QC Testing

Purity

> 80 % as determined by SDS-PAGE

Endotoxin

< 1.0 EU per μg of the protein as determined by the LAL method

Stability

Samples are stable for up to twelve months from date of receipt at -70°C

Predicted N terminal

Asp 23

Molecular Mass

The recombinant human CD3E consists of 115 amino acids after removal of the signal peptide and has a predicted molecular mass of 13.2 kDa.

Formulation

Lyophilized from sterile PBS, pH 7.4

1. 5 % trehalose and mannitol are added as protectants before lyophilization.

2. Please contact us for any concerns or special requirements.

Usage Guide

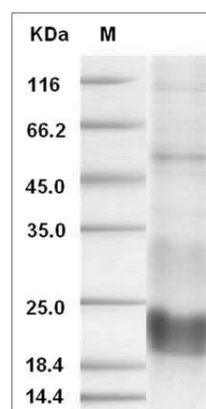
Storage

Store it under sterile conditions at -20°C to -80°C . It is recommended that the protein be aliquoted for optimal storage. Avoid repeated freeze-thaw cycles.

Reconstitution

Adding sterile water, prepare a stock solution of 0.25 mg/ml. Concentration is measured by UV-Vis.

SDS-PAGE



Human CD3e / CD3 epsilon Protein (His Tag)