

IκB alpha antibody

Catalog Number: 111639

Product name

IκB alpha antibody

Specificity

Human, Mouse, Rat, Pig; other species not tested.

Antibody description

IκB alpha Rabbit Polyclonal antibody. Positive IHC detected in human ovary tumor tissue, human prostate cancer tissue. Positive IF detected in HeLa cells. Positive FC detected in HeLa cells, NIH/3T3 cells. Positive IP detected in HeLa cells. Positive WB detected in HeLa cells, A431 cells, HEK-293 cells, HL-60 cells, Jurkat cells, mouse liver tissue, NIH/3T3 cells, pig liver tissue. Observed molecular weight by Western-blot: 36-40 kDa

Preparation

This antibody was obtained by immunization of IκB alpha recombinant protein (Accession Number: NM_020529). Purification method: Antigen affinity purified.

Formulation

PBS with 0.1% sodium azide and 50% glycerol pH 7.3.

Storage

Store at -20°C. DO NOT ALIQUOT

Clonality

Polyclonal

Ig Type

Rabbit IgG

Applications

ELISA, IHC, IF, WB, FC, IP

Dilutions

Recommended Dilution:

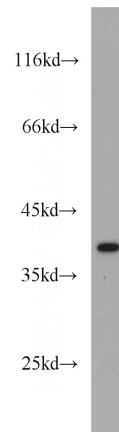
WB: 1:200-1:2000

IP: 1:500-1:5000

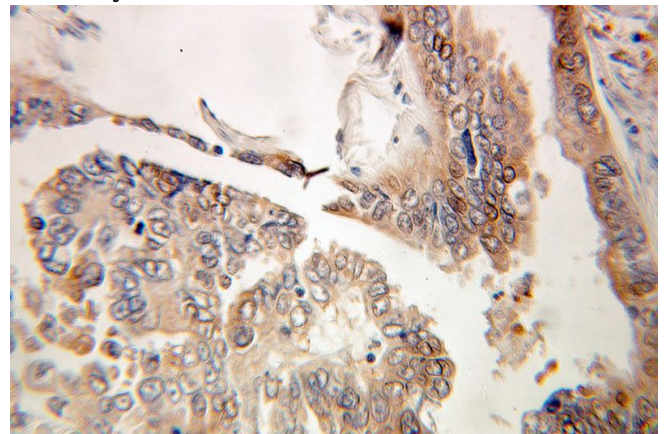
IHC: 1:20-1:200

IF: 1:10-1:100

Validations



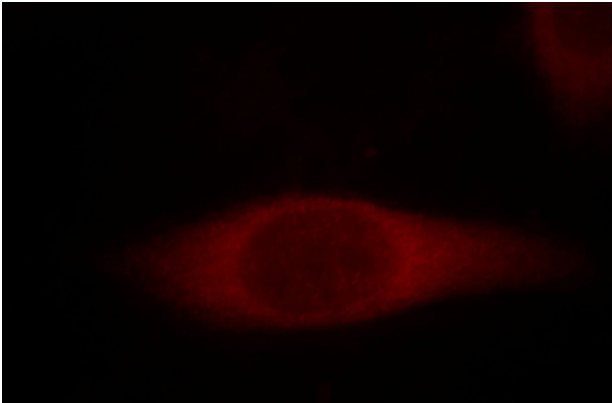
HeLa cells were subjected to SDS PAGE followed by western blot with Catalog No:111639(NFKBIA antibody) at dilution of 1:500



Immunohistochemical of paraffin-embedded human ovary tumor using Catalog No:111639(NFKBIA antibody) at dilution of 1:100 (under 25x lens)

IkB alpha antibody

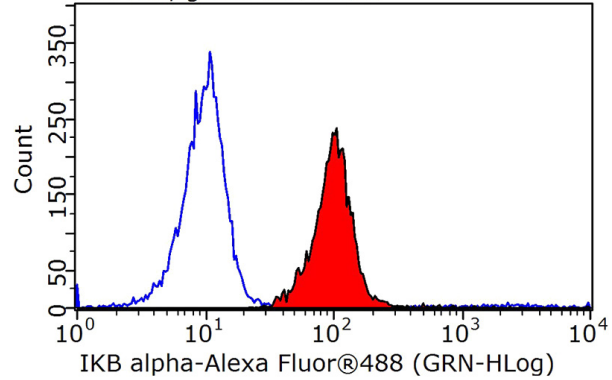
Catalog Number: 111639



Immunofluorescent analysis of HeLa cells, using NFKBIA antibody Catalog No:111639 at 1:25 dilution and Rhodamine-labeled goat anti-rabbit

IP Result of anti-NFKBIA (IP:Catalog No:111639, 4ug; Detection:Catalog No:111639 1:1000) with HeLa cells lysate 4000ug.

Plot P03, gated on P01.R1



1X10⁶ HeLa cells were stained with 0.2ug NFKBIA antibody (Catalog No:111639, red) and control antibody (blue). Fixed with 90% MeOH blocked with 3% BSA (30 min). Alexa Fluor 488-conjugated AffiniPure Goat Anti-Rabbit IgG(H+L) with dilution 1:1000.

