

RBBP7 Polyclonal Antibody



Catalog Number: 161639

Product name

RBBP7 Polyclonal Antibody

Specificity

Human, Rat

Antibody description

Polyclonal antibody to RBBP7

Preparation

Antigen: Recombinant fusion protein containing a sequence corresponding to amino acids 1-230 of human RBBP7 (NP_002884.1).

Formulation

PBS with 0.02% sodium azide, 50% glycerol, pH7.3.

Storage

Store at -20°C. Avoid freeze / thaw cycles.

Clonality

Polyclonal

Ig Type

Rabbit IgG

Applications

WB, IHC, IF, ChIP

Dilutions

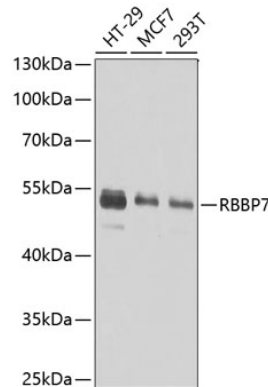
WB 1:500 - 1:2000

IHC 1:50 - 1:200

IF 1:50 - 1:200

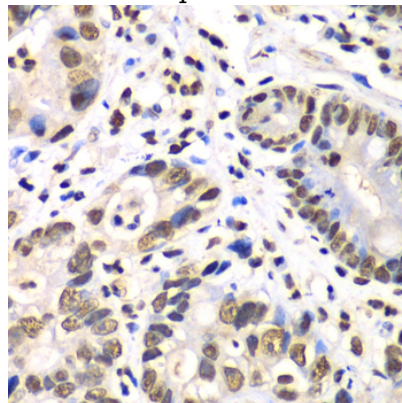
ChIP 1:50 - 1:200

Validations



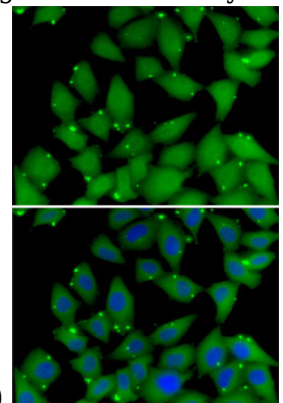
Western blot - RBBP7 Polyclonal Antibody

Western blot analysis of extracts of various cell lines, using RBBP7 antibody at 1:1000 dilution. Secondary antibody: HRP Goat Anti-Rabbit IgG (H+L) at 1:10000 dilution. Lysates/proteins: 25ug per lane. Blocking buffer: 3% nonfat dry milk in TBST. Detection: ECL Basic Kit. Exposure time: 1s.



Immunohistochemistry - RBBP7 Polyclonal Antibody

Immunohistochemistry of paraffin-embedded human gastric cancer using RBBP7 antibody at



dilution of 1:100 (40x lens).

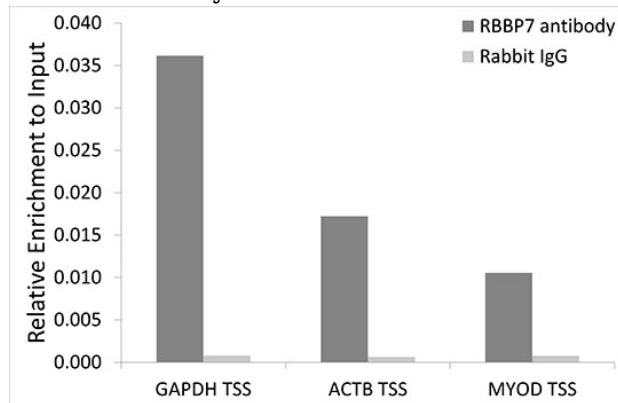
RBBP7 Polyclonal Antibody



Catalog Number: 161639

Immunofluorescence - RBBP7 Polyclonal Antibody

Immunofluorescence analysis of MCF7 cells using RBBP7 antibody. Blue: DAPI for nuclear staining.



Chromatin Immunoprecipitation - RBBP7 Polyclonal Antibody

Chromatin immunoprecipitation analysis of extracts of 293T cells, using RBBP7 antibody and rabbit IgG. The amount of immunoprecipitated DNA was checked by quantitative PCR. Histogram was constructed by the ratios of the immunoprecipitated DNA to the input.