

# TOM70 antibody



Catalog Number: 116239

## Product name

TOM70 antibody

## Specificity

Human, Mouse, Rat; other species not tested.

## Antibody description

TOM70 Rabbit Polyclonal antibody. Positive IF detected in Hela cells. Positive IHC detected in human heart tissue, human kidney tissue, human liver tissue. Positive FC detected in HeLa cells. Positive IP detected in mouse brain tissue. Positive WB detected in mouse liver tissue, MCF7 cells, mouse brain tissue, mouse heart tissue, mouse skeletal muscle tissue, rat heart tissue, rat skeletal muscle tissue. Observed molecular weight by Western-blot: 67kd

## Preparation

This antibody was obtained by immunization of TOM70 recombinant protein (Accession Number: NM\_014820). Purification method: Antigen affinity purified.

## Formulation

PBS with 0.02% sodium azide and 50% glycerol pH 7.3.

## Storage

Store at -20°C. DO NOT ALIQUOT

## Clonality

Polyclonal

## Ig Type

Rabbit IgG

## Applications

ELISA, IF, WB, IHC, IP, FC

## Dilutions

Recommended Dilution:

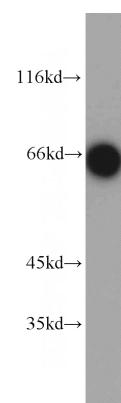
WB: 1:500-1:5000

IP: 1:200-1:2000

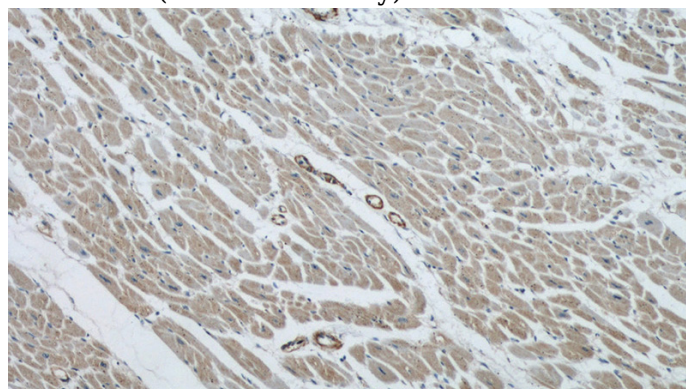
IHC: 1:20-1:200

IF: 1:10-1:100

## Validations



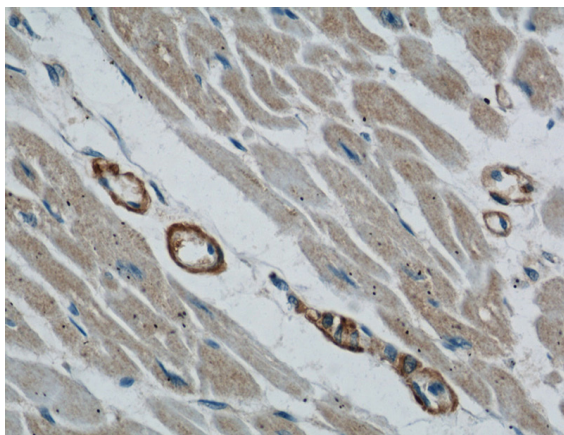
mouse liver tissue were subjected to SDS PAGE followed by western blot with Catalog No:116239(TOM70 antibody) at dilution of 1:1500



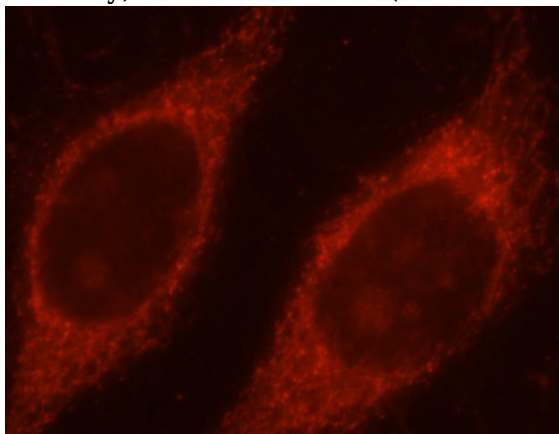
Immunohistochemical of paraffin-embedded human heart using Catalog No:116239(TOM70 antibody) at dilution of 1:50 (under 10x lens)

# TOM70 antibody

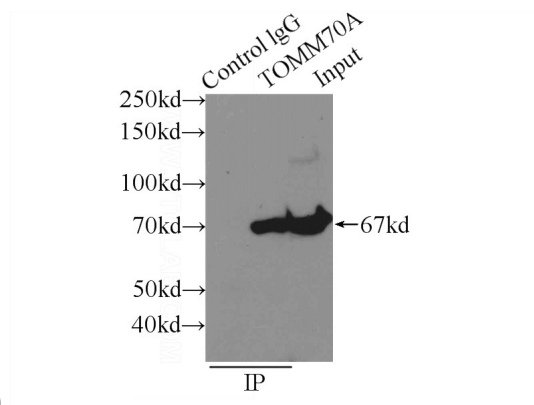
Catalog Number: 116239



Immunohistochemical of paraffin-embedded human heart using Catalog No:116239(TOM70 antibody) at dilution of 1:50 (under 40x lens)

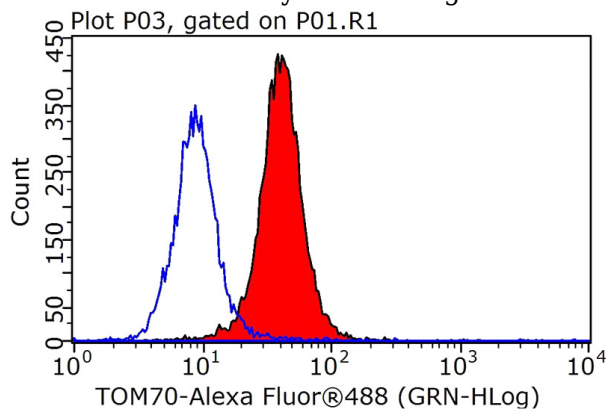


Immunofluorescent analysis of HeLa cells, using TOMM70A antibody Catalog No:116239 at 1:25 dilution and Rhodamine-labeled goat anti-rabbit



IgG (red).

IP Result of anti-TOM70 (IP:Catalog No:116239, 3ug; Detection:Catalog No:116239 1:500) with mouse brain tissue lysate 6000ug.



1X10<sup>6</sup> HeLa cells were stained with .2ug TOM70 antibody (Catalog No:116239, red) and control antibody (blue). Fixed with 90% MeOH blocked with 3% BSA (30 min). FITC-Goat anti-Rabbit IgG with dilution 1:100.