

# ITPKB Polyclonal Antibody



Catalog Number: 164239

## Product name

ITPKB Polyclonal Antibody

## Specificity

Human, Mouse, Rat

## Antibody description

Polyclonal antibody to ITPKB

## Preparation

Antigen: Recombinant fusion protein containing a sequence corresponding to amino acids 1-260 of human ITPKB (NP\_002212.3).

## Formulation

PBS with 0.02% sodium azide, 50% glycerol, pH7.3.

## Storage

Store at -20°C. Avoid freeze / thaw cycles.

## Clonality

Polyclonal

## Ig Type

Rabbit IgG

## Applications

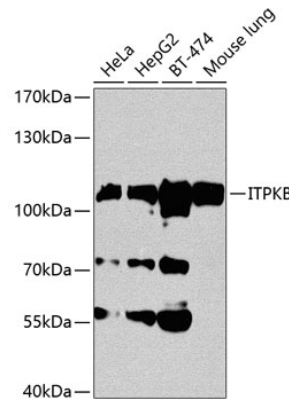
WB, IHC

## Dilutions

WB 1:200 - 1:2000

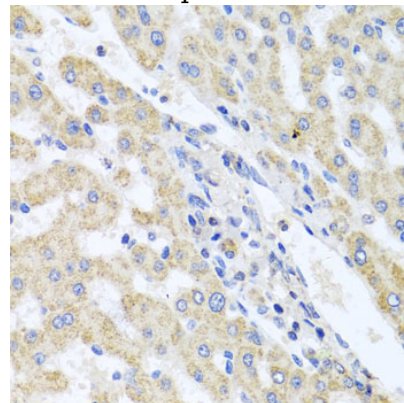
IHC 1:20 - 1:200

## Validations



Western blot - ITPKB Polyclonal Antibody

Western blot analysis of extracts of various cell lines, using ITPKB antibody at 1:1000 dilution. Secondary antibody: HRP Goat Anti-Rabbit IgG (H+L) at 1:10000 dilution. Lysates/proteins: 25ug per lane. Blocking buffer: 3% nonfat dry milk in TBST. Detection: ECL Basic Kit. Exposure time: 60s.



Immunohistochemistry - ITPKB Polyclonal Antibody

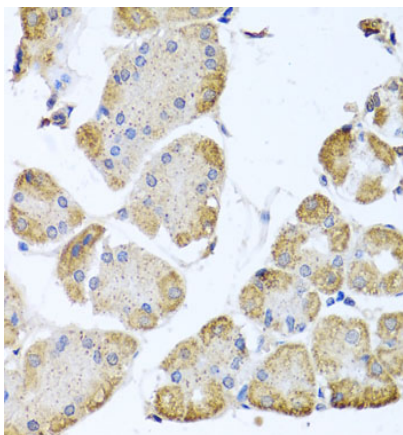
Immunohistochemistry of paraffin-embedded human liver injury using ITPKB antibody at dilution of 1:100 (40x lens).

# ITPKB Polyclonal Antibody



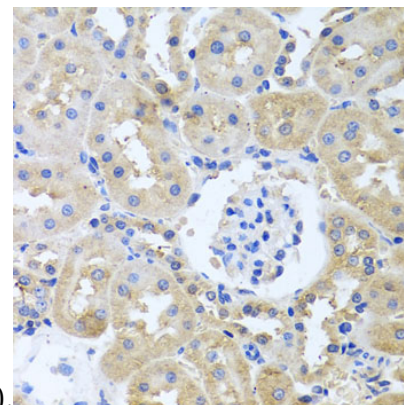
Catalog Number: 164239

---



Immunohistochemistry - ITPKB Polyclonal Antibody

Immunohistochemistry of paraffin-embedded human stomach using ITPKB antibody at dilution



of 1:100 (40x lens).

Immunohistochemistry - ITPKB Polyclonal Antibody

Immunohistochemistry of paraffin-embedded rat kidney using ITPKB antibody at dilution of 1:100 (40x lens).