

# LIN9 antibody

Catalog Number: 112239

## Product name

LIN9 antibody

## Specificity

Human, Mouse, Rat; other species not tested.

## Antibody description

LIN9 Rabbit Polyclonal antibody. Positive IP detected in HEK-293 cells. Positive WB detected in HEK-293 cells. Observed molecular weight by Western-blot: 62 kDa

## Preparation

This antibody was obtained by immunization of LIN9 recombinant protein (Accession Number: NM\_173083). Purification method: Antigen affinity purified.

## Formulation

PBS with 0.1% sodium azide and 50% glycerol pH 7.3.

## Storage

Store at -20°C. DO NOT ALIQUOT

## Clonality

Polyclonal

## Ig Type

Rabbit IgG

## Applications

ELISA, WB, IP

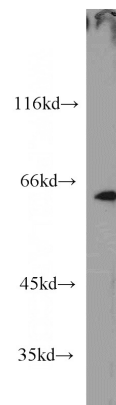
## Dilutions

Recommended Dilution:

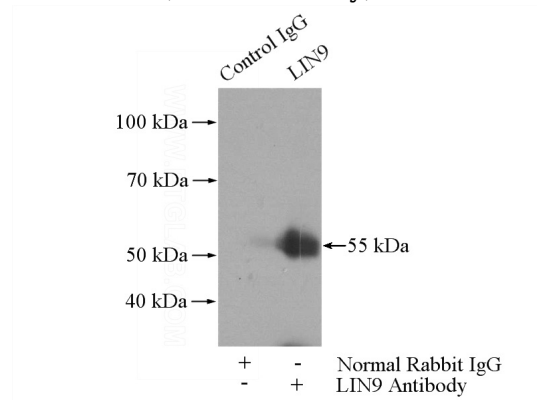
WB: 1:200-1:2000

IP: 1:500-1:5000

## Validations



HEK-293 cells were subjected to SDS PAGE followed by western blot with Catalog No:112239(LIN9 antibody) at dilution of 1:1000



IP Result of anti-LIN9 (IP:Catalog No:112239, 4ug; Detection:Catalog No:112239 1:1000) with HEK-293 cells lysate 1100ug.