

Anti-Phospho-Tau (Thr50) Rabbit antibody



Catalog Number: 166939

Product name

Anti-Phospho-Tau (Thr50) Rabbit antibody

Ig Type

Rabbit IgG

Specificity

Human

Applications

WB, ICC/IF, IP

Antibody description

Phospho-Tau (Thr50) Rabbit polyclonal antibody

Dilutions

WB: 1/1000

ICC/IF: 1/50

IP: 1/20

Preparation

Antigen: A synthetic phosphopeptide corresponding to residues surrounding Thr50 of human Tau

Validations

Formulation

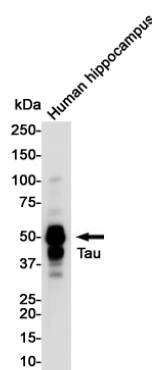
Supplied in 50nM Tris-Glycine(pH 7.4), 0.15M NaCl, 40%Glycerol, 0.01% sodium azide and 0.05% BSA.

Storage

Store at -20°C. Stable for 12 months from date of receipt.

Clonality

Polyclonal



Western blot detection of Tau (Phospho-Thr50) in Human Hippocampus lysates using Tau (Phospho-Thr50) Rabbit pAb(1:1000 diluted). Predicted band size:79KDa.Observed band size:50-80KDa.