

Product name

Anti-NEFH antibody

Specificity

Human NEFH

Antibody description

Rabbit polyclonal to NEFH

Preparation

Produced in rabbits immunized with A synthetic peptide corresponding to the center region of the human NEFH, and purified by antigen affinity chromatography.

Formulation

0.2 µm filtered solution in PBS

Storage

This antibody can be stored at 2°C-8°C for one month without detectable loss of activity. Antibody products are stable for twelve months from date of receipt when stored at -20°C to -80°C.

Preservative-Free.

Sodium azide is recommended to avoid contamination (final concentration 0.05%-0.1%). It is toxic to cells and should be disposed of properly. Avoid repeated freeze-thaw cycles.

Clonality

Polyclonal

Ig Type

Rabbit IgG

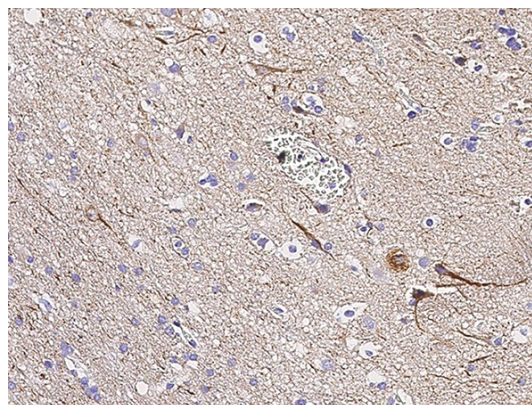
Applications

IHC-P

Dilutions

IHC-P: 0.1-1 µg/mL

Validations



NEFH Antibody, Rabbit PAb, Antigen Affinity Purified, Immunohistochemistry

Immunochemical staining of human NEFH in human brain with rabbit polyclonal antibody (0.1 µg/mL, formalin-fixed paraffin embedded sections).